

TOKYO SEEDS

A lush, misty forest scene with a stream flowing over moss-covered rocks. The water is clear and reflects the surrounding greenery. The rocks are large and covered in vibrant green moss. The background is filled with tall, thin trees and dense foliage, creating a sense of depth and tranquility. The overall atmosphere is serene and natural.

池袋：池の袋


水と緑に満ち溢れる町。 農業の町。肥沃で実り多い。

生命の源。

Ikebukuro, pockets of ponds.

An area filled with water, lush and full of greenery.
A farming community. Fertile and fruitful.

Origin of life.



そして、
工事が始まり、駅が建ち
都市開発が急速に進んだ。
池が枯れ、人が出ていった。
袋が空っぽになった。

人々はほかの町に移った。

Then, construction commenced.
Railway stations erected. Rapid development of cities.

Ponds dried, pockets are left empty.

People preferred other towns.



今や、
世界屈指の利用者数を誇る駅。
しかし、周辺は空き家と空き地だらけ。
そして人口が減少していく。

Today, Ikebukuro has one of the busiest railway stations
in the world.

However, population is forecasted to decrease dramatically.



私たちは
豊島区と池袋を次世代のために活気を
取り戻す責任を持っている。

ここの伝統を守り、物語を描き続けよう。
愛される町にしよう。

We are responsible for bringing back the richness
of Ikebukuro, Toshima ward for our future generations.

Preserve tradition and continue the story.
A place to love.

Three green circles are arranged horizontally. The first circle on the left contains the text '2027' and 'DESIRE' in white. The middle circle contains '20-YEAR' and 'APPRECIATE' in a dark green color. The third circle on the right contains '30-YEAR' and 'LOVE' in a dark green color.

2027
DESIRE

20-YEAR
APPRECIATE

30-YEAR
LOVE

2027

DISCOVER
EXPERIENCE
CULTIVATE

DESIRE

20-YEAR
APPRECIATE

30-YEAR
LOVE

池袋と恋に落ちよう FALL IN LOVE WITH IKEBUKURO





TOKYO MOVING
ROUND



IKEBUKURO

LIKEBUKURO

自由学園明日館

羽仁もと子 羽仁吉一 夫婦
FRANK L WRIGHT

THINK AHEAD
LIKE BUKURO



南池袋公園

TODEN ARAKAWA LINE

SUNSHINE 60

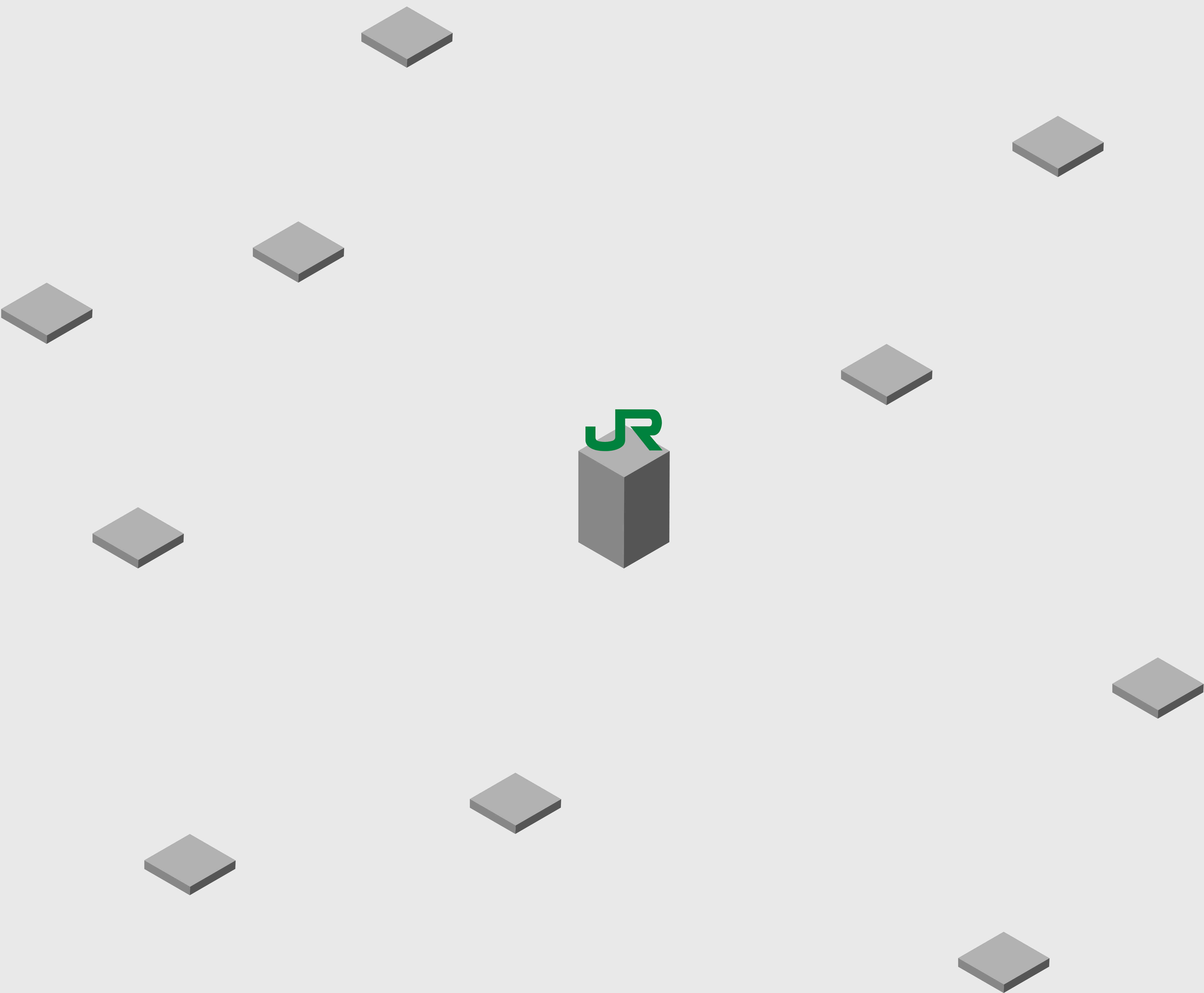
雑司ヶ谷鬼子母神堂

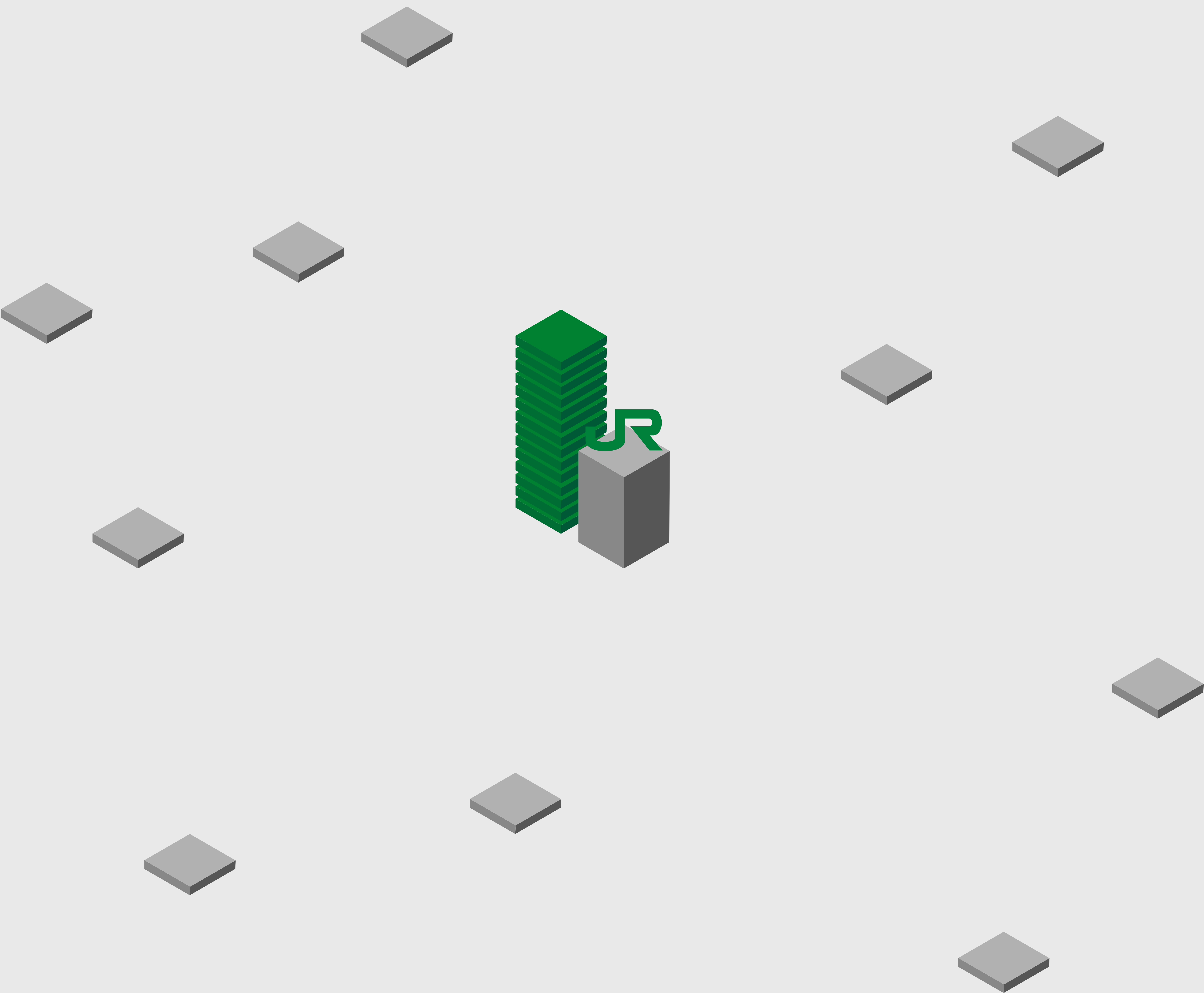
METROPOLITAN THEATRE

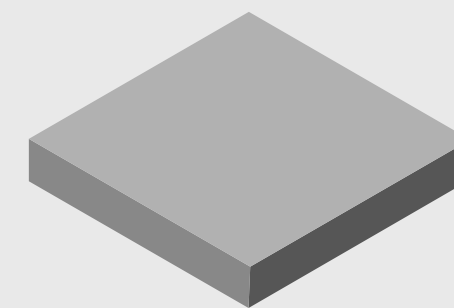
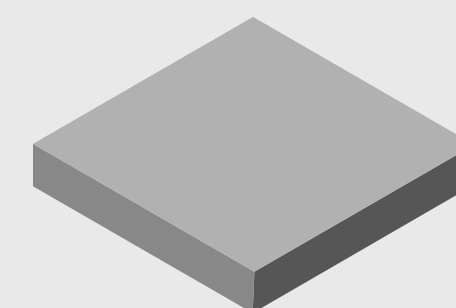
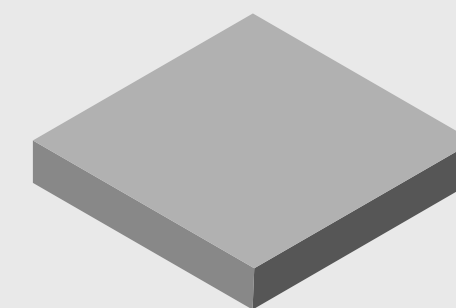
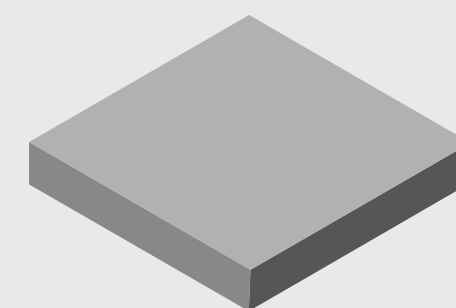
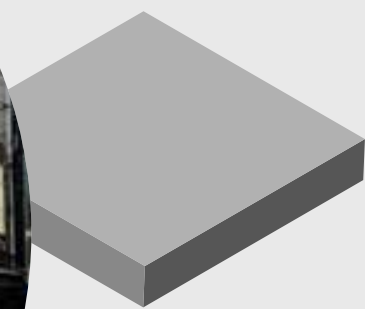
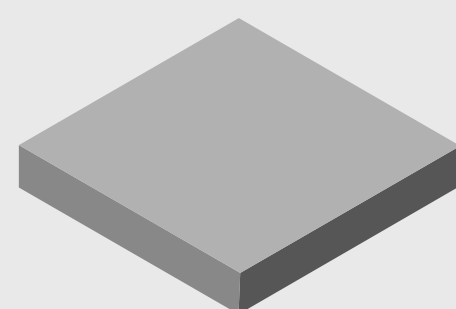
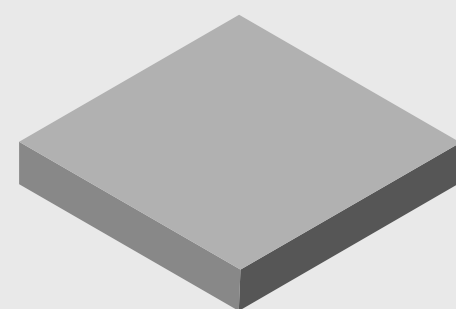
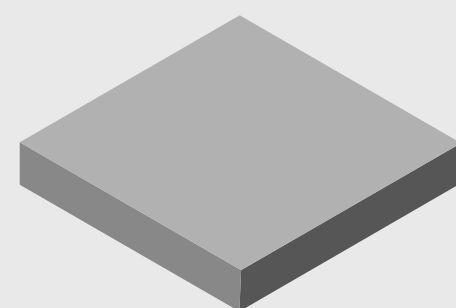
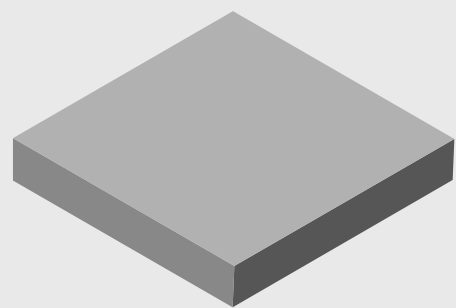
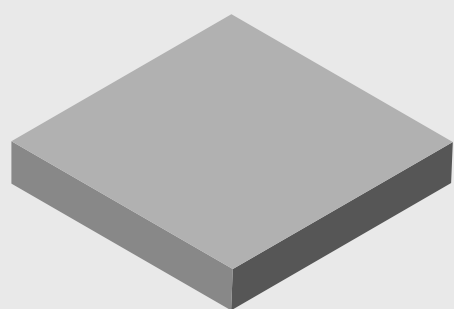
Etc...

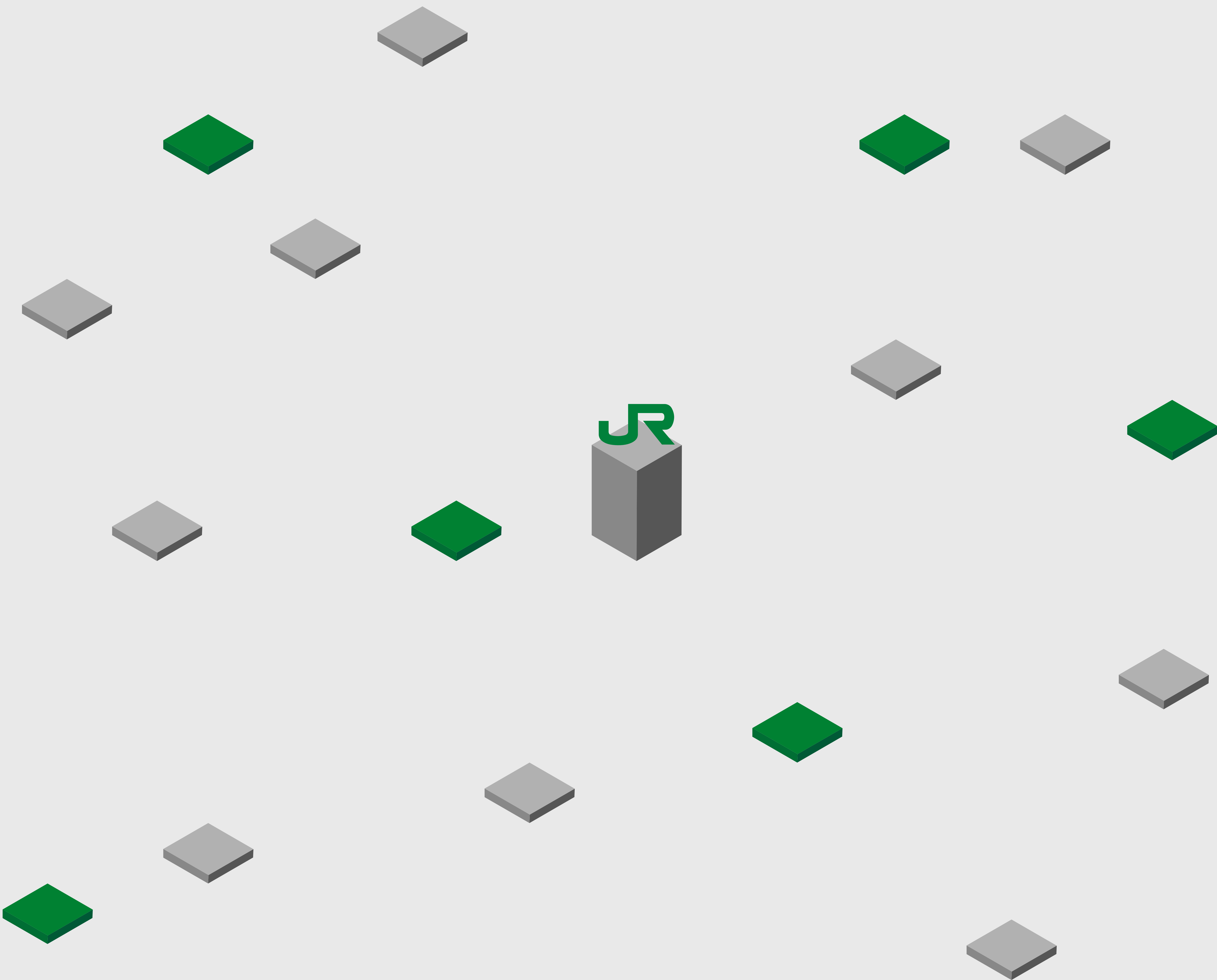
WE

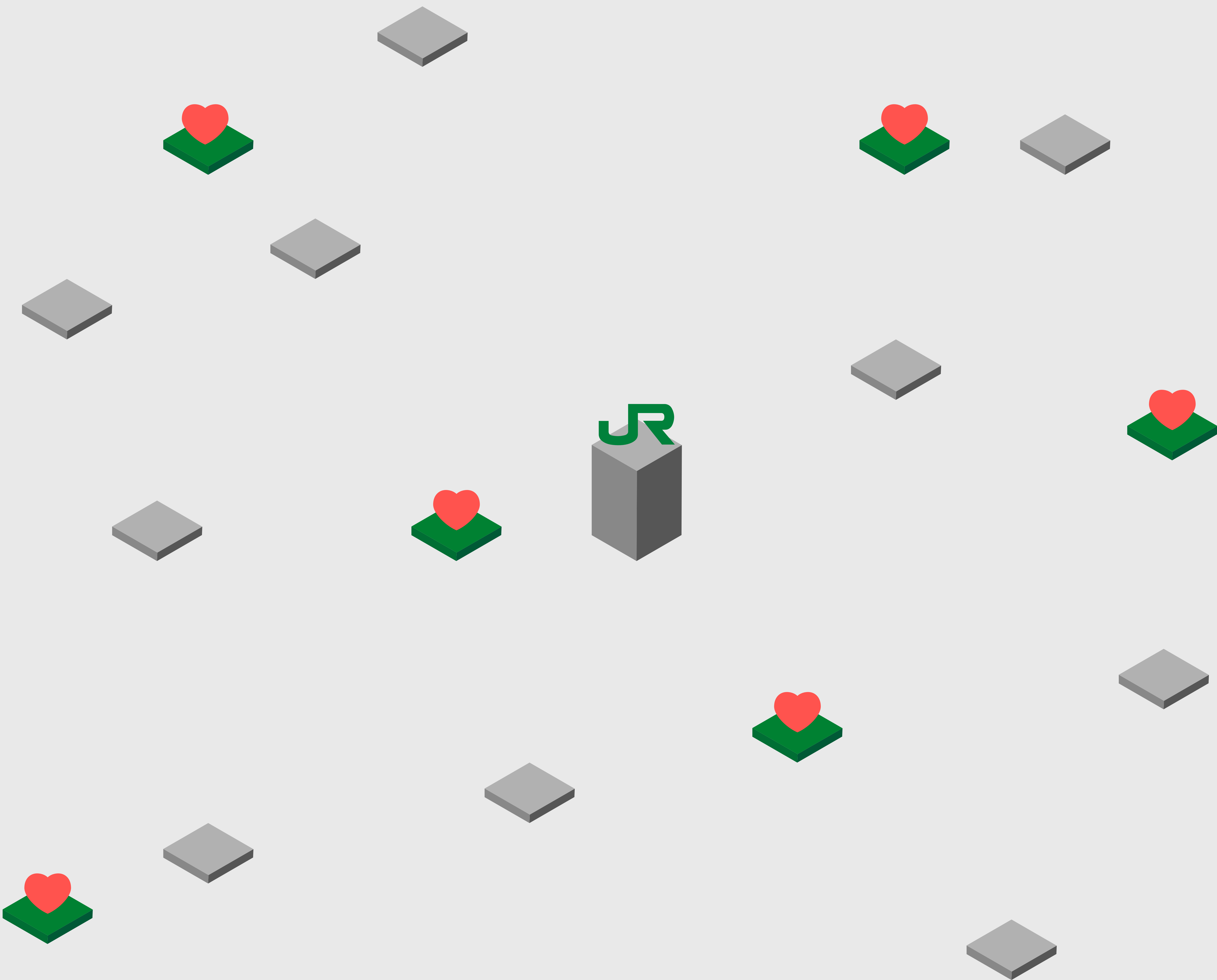
LIKEBUKURO











オレンジペーシ



いつもの場所で、いつもは変わる。

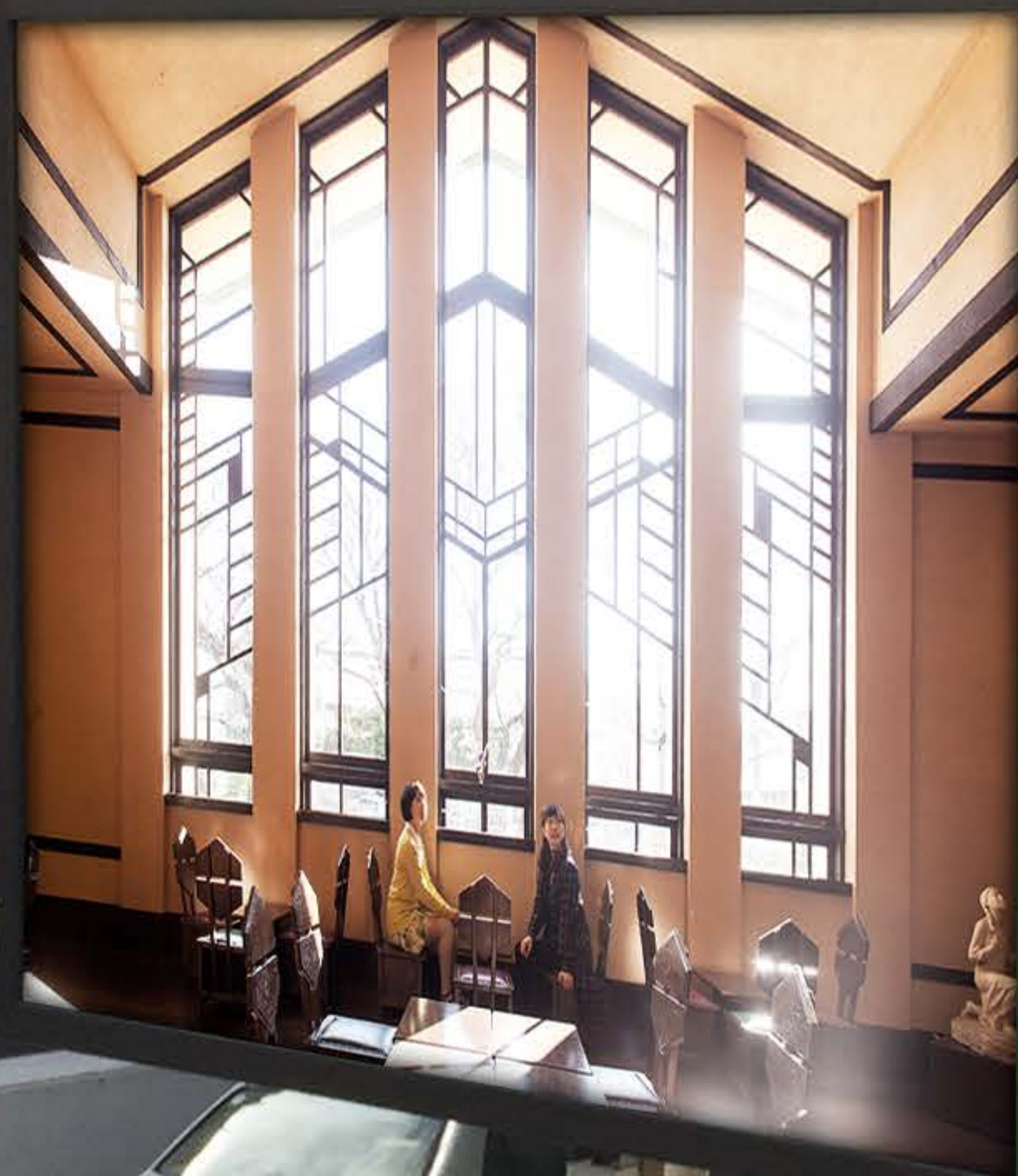
acure

アキュア

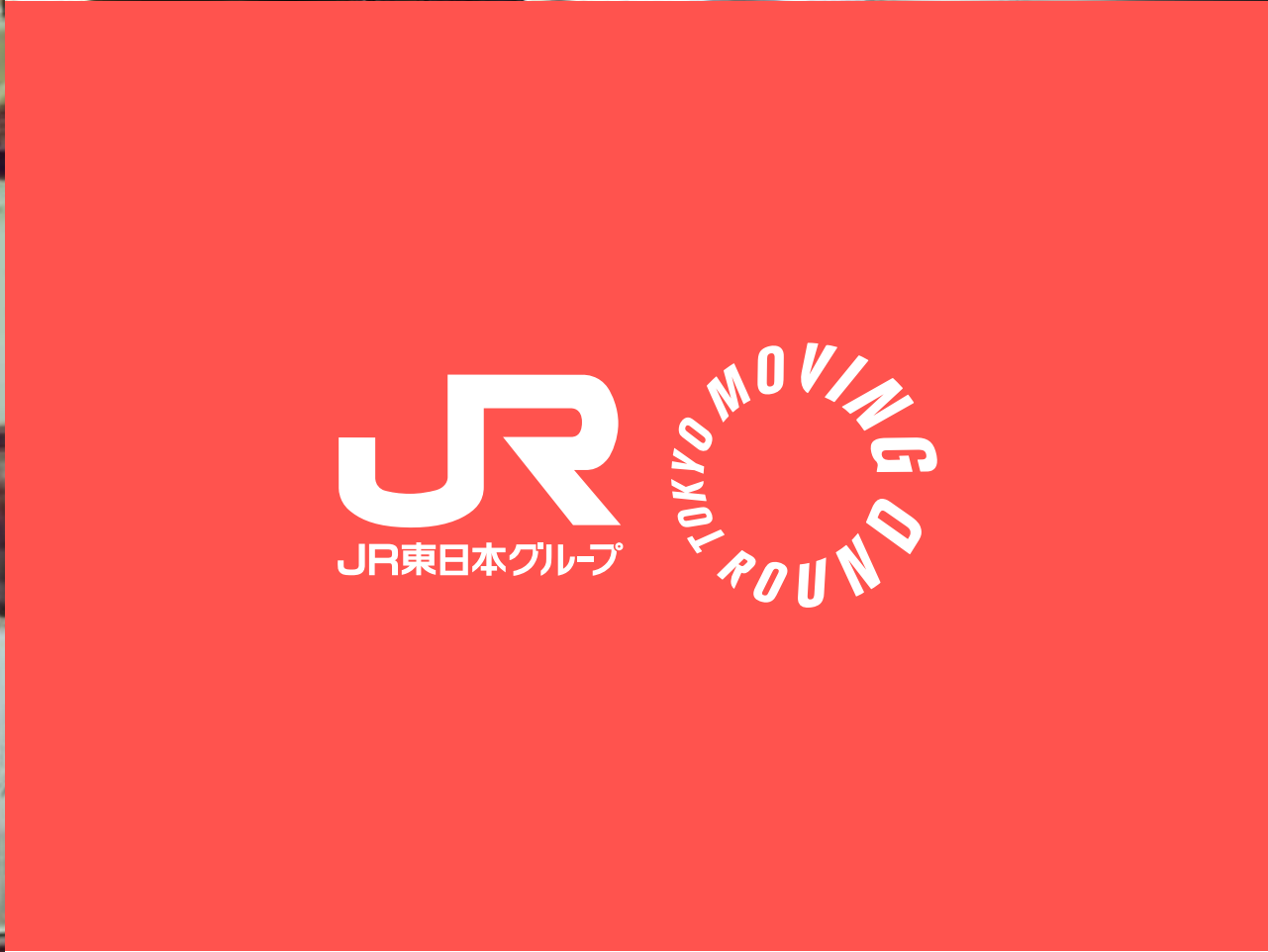
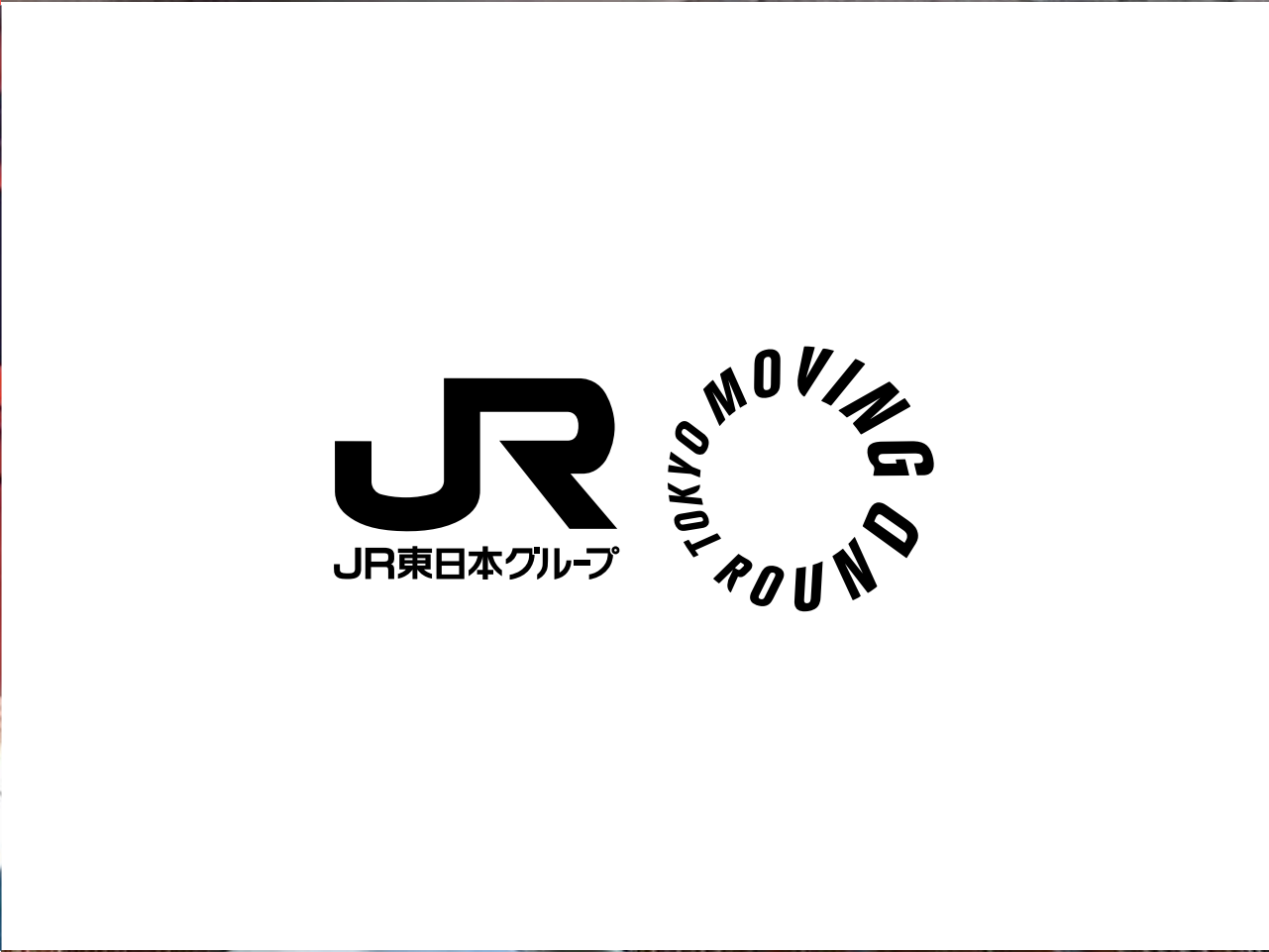
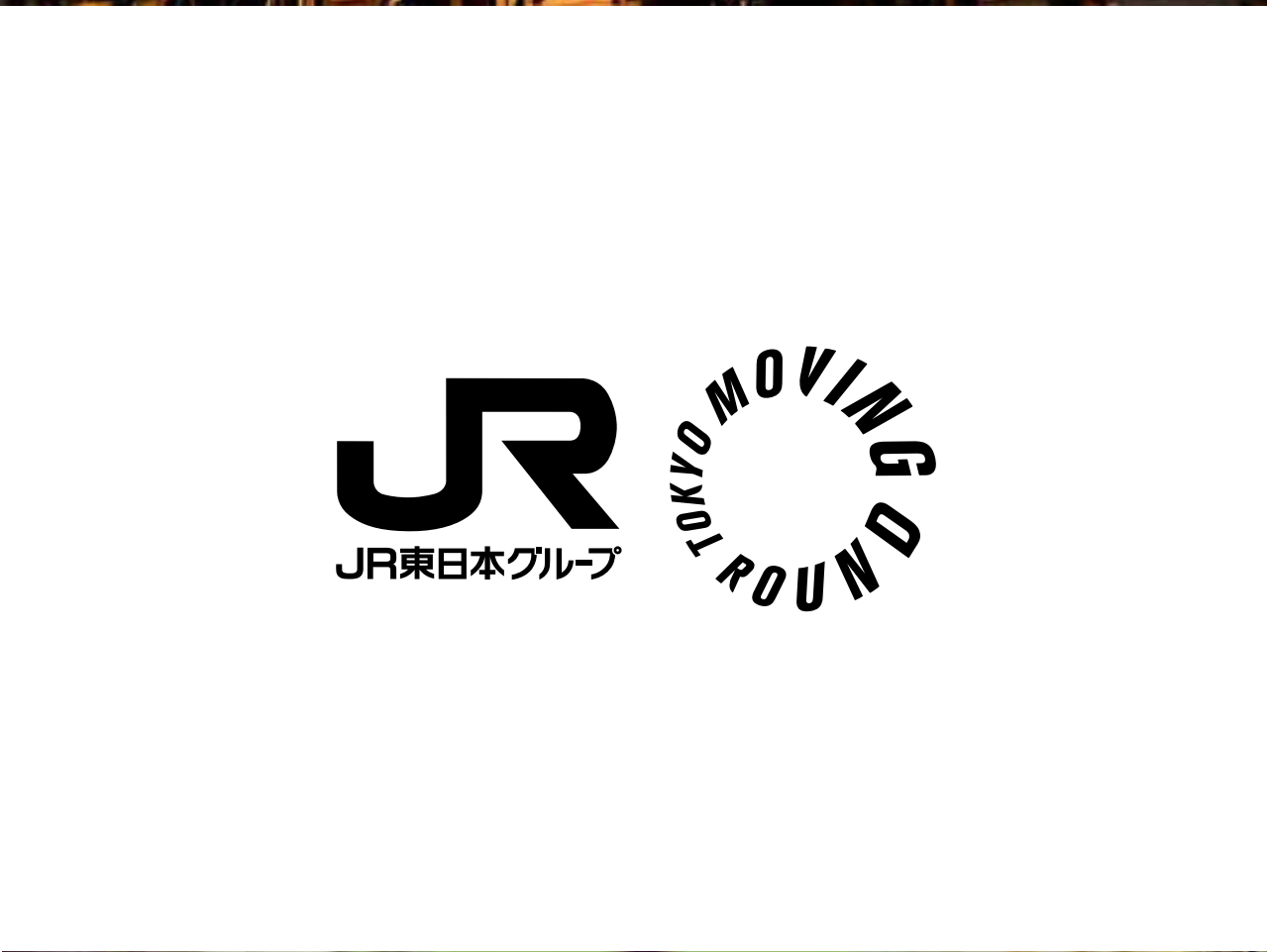
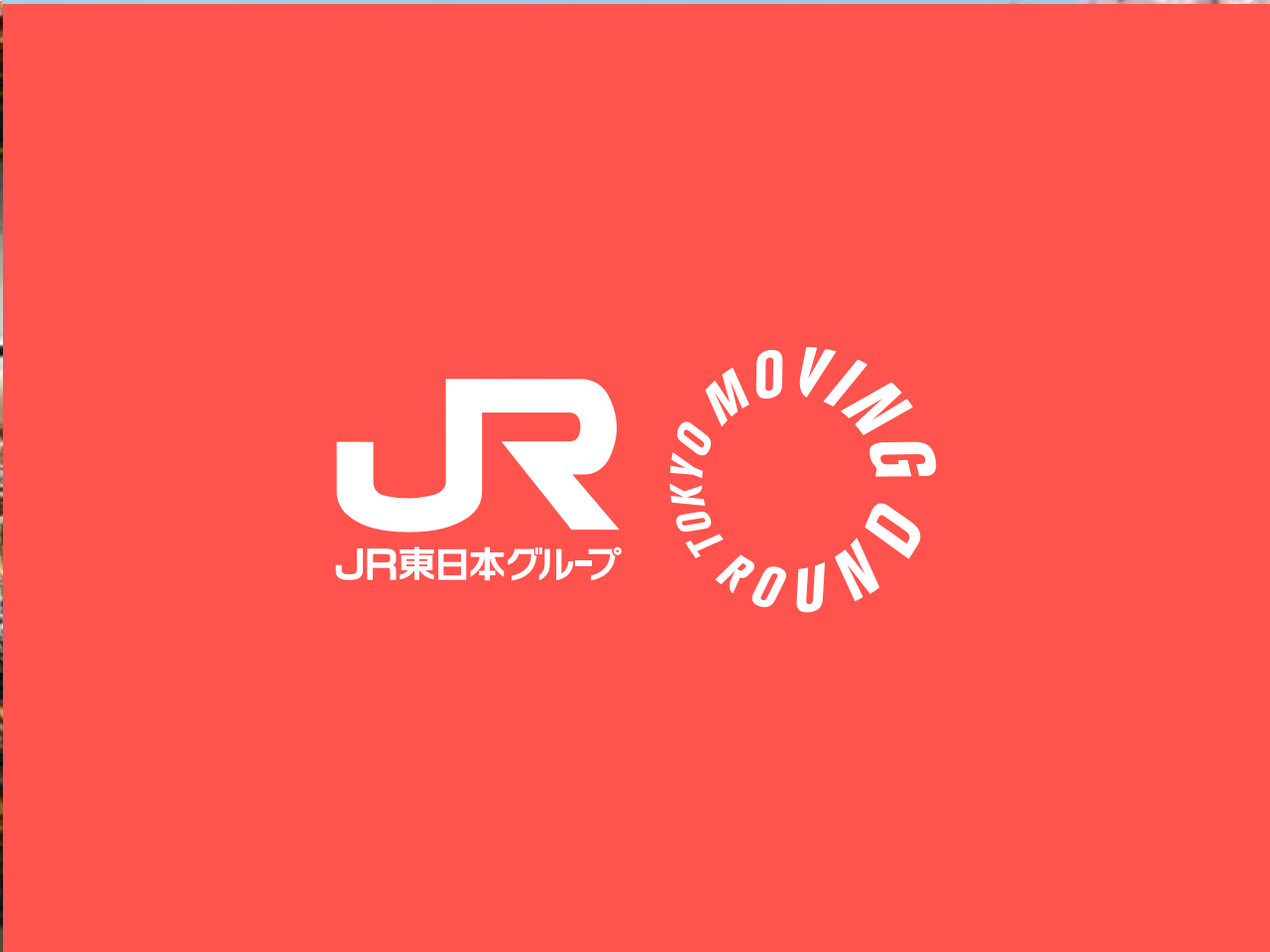
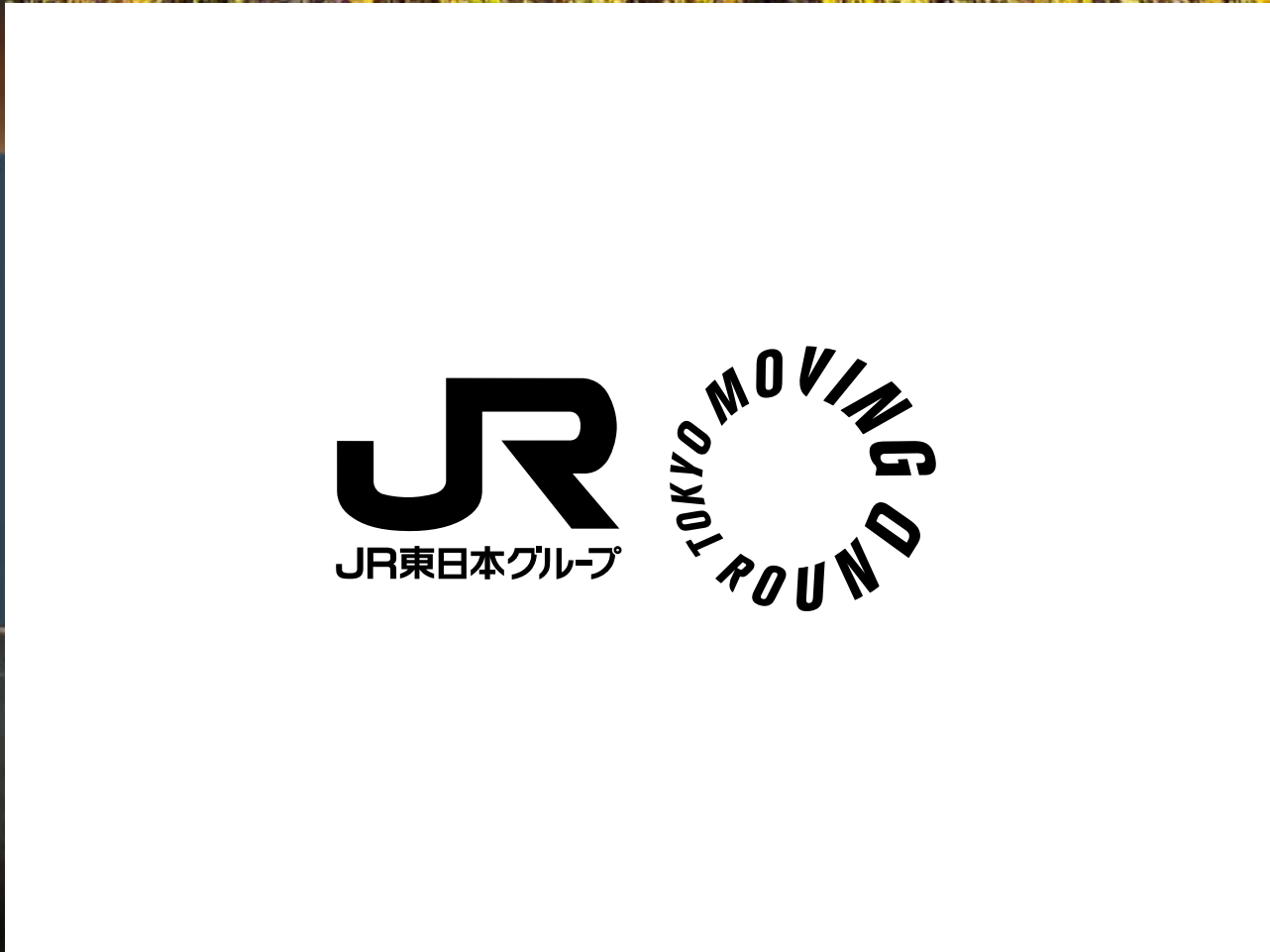
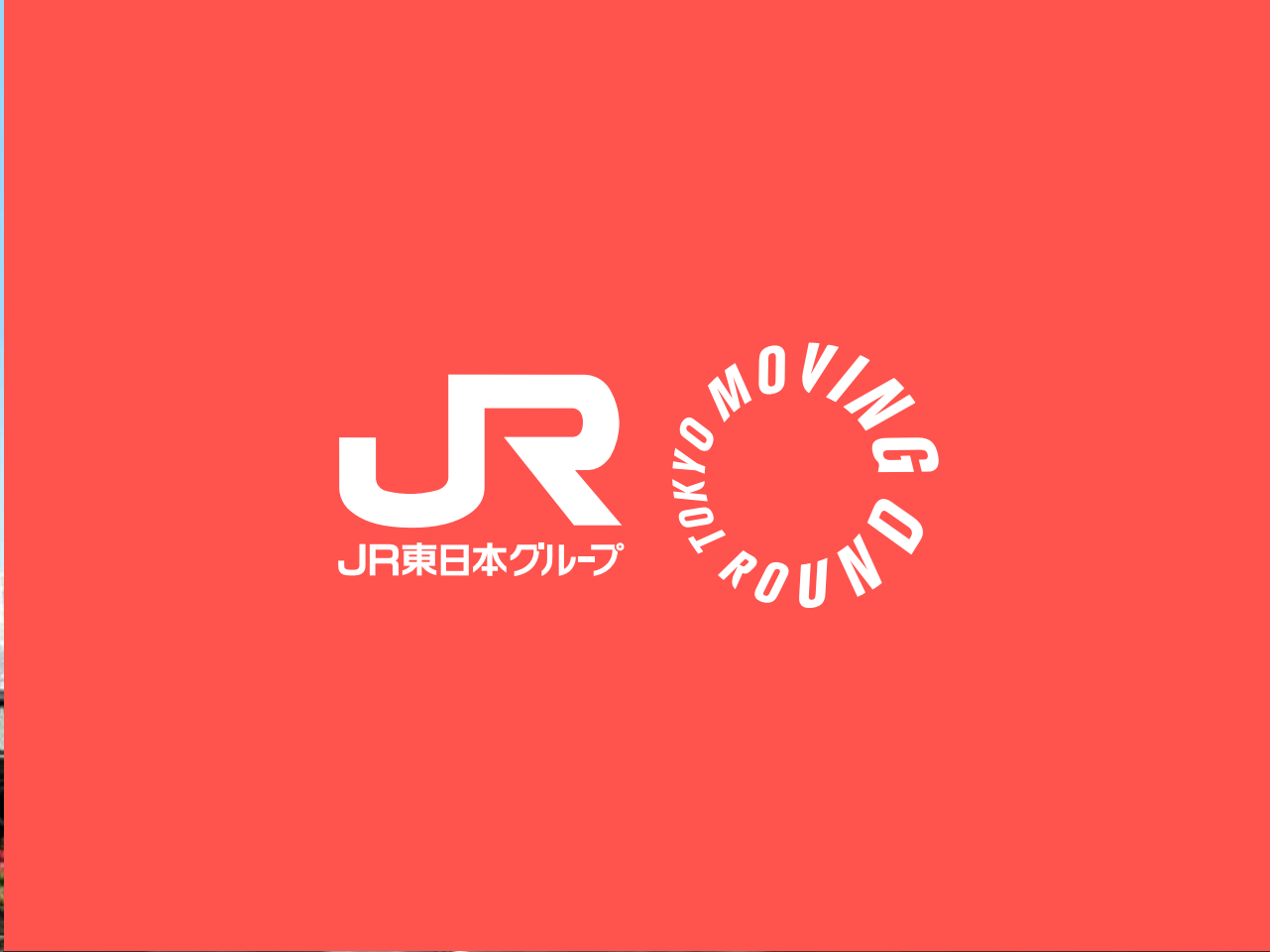


IN A TOWN
LIKE BUKURO
YOU CAN
HAVE IT ALL

CELEBRATE
LIKEBUKURO



大学受験・高校生・中学生
ウィングロープ英語塾
200m
高田馬場
4-4





JR東日本

池袋駅

Likebukuro Station



あうるすぽっと

740m

Aurum Performing Arts Center (PAC) SPOT



池袋職業安定所

Itabashi Public Employment Security Office



520m



労働相談情報センター

Labor Consultation Center



710m



池袋駅

Itabashi Station

東口

East Entrance



帝京平成大学





ARTISTIC
LIKEBUKURO



FUN
LIKEBUKURO



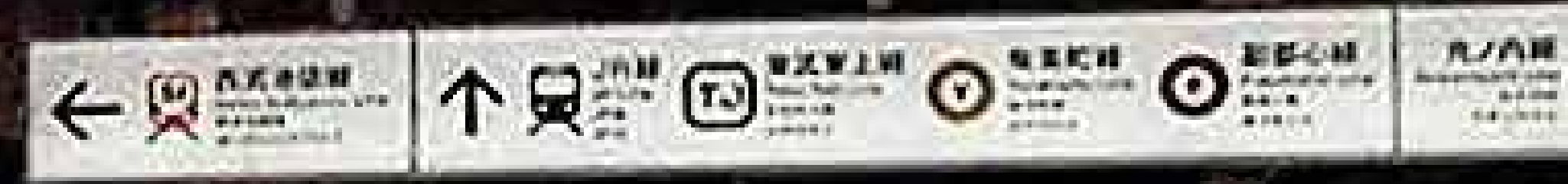
CREATIVE
LIKEBUKURO





池袋駅


Likebukuro Station





東武鉄道 池袋駅 西口
Likebukuro Station West





池袋を愛される町にしよう。
人々が行く町にしよう。

そして世代を超えて住む町にしよう。
こうやって池袋は活性化していくでしょう。

Play a part in making Ikebukuro more likeable.
We can bring people back into the neighbourhood.

We want them to stay for generations.
Ikebukuro can be lively again.

生命に溢れる池の袋。
昔のような活気を取り戻そう。

池袋
LIKEBUKURO

A town that has pockets of life.
Just like how it used to be.

Just LIKEBUKURO



JR東日本グループ

TOKYO MOVING ROUND



THANK YOU