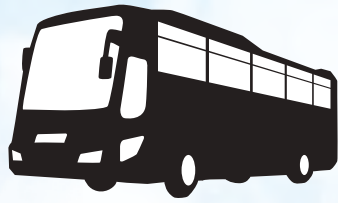


Departing from and arriving at Nagano Station  
 長野站出发到达 / 由長野車站來回 / 나가노역 출발

**Get your money's worth!**  
 超值! 高效! / 省錢! 效率高! / 저렴하게! 효율적으로!

**Tour guide included!** (With multilingual voice guidance)  
 导游同行! (带多语种语音向导) / 有導遊同行! (附多語種語音嚮導) / 가이드 포함! (다언어 음성 안내 포함)



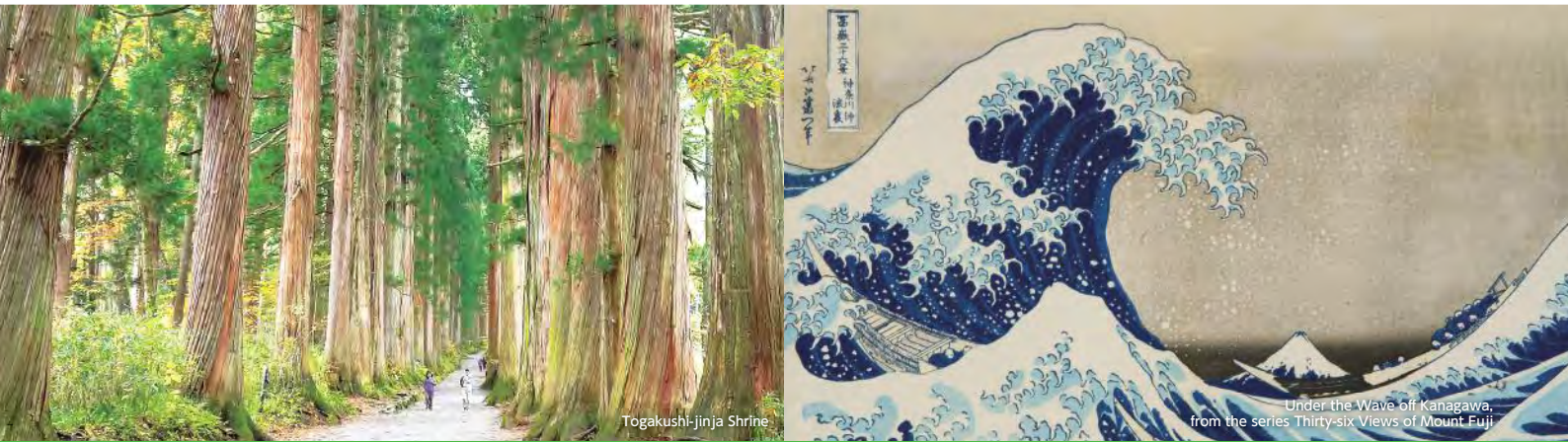
**Regular Sightseeing Bus Tours**  
 定期觀光巴士 / 定期觀光巴士 / 정기관광버스

**Day-of tickets available!**  
 当天报名即可乘坐! / 當天訂票即可搭乘! / 당일 신청&승차 가능!

**Online booking OK!**  
 接受在线预约! / 接受網路訂票! / 인터넷 예약 가능!

# Zenkōji & Obuse & Togakushi 1-day Bus Tour

善光寺、小布施和戸隠 1日巴士遊 / 善光寺 & 小布施 & 戸隠 1日巴士遊 / 젠코지&오부세&도가쿠시 1일 버스 투어



Togakushi-jinja Shrine

Under the Wave off Kanagawa, from the series Thirty-six Views of Mount Fuji

9:00am Departure (Zenkōji Temple visit course)

Bus fare Adults 4,000 yen Children 2,000 yen

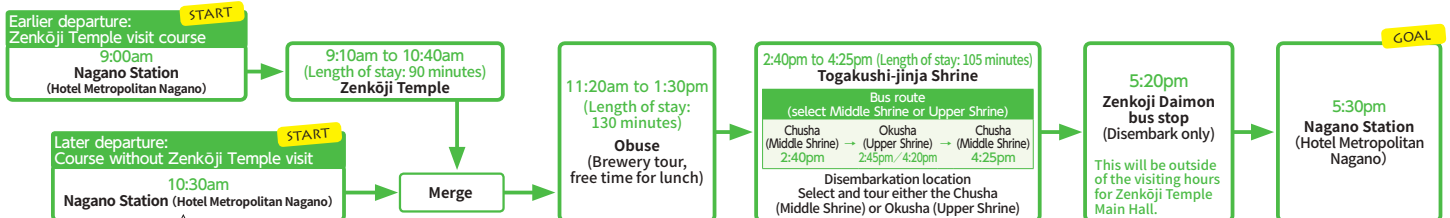
10:30am Departure

Bus fare Adults 3,500 yen Children 1,750 yen

巴士乘車費用 9:00出發(善光寺參拜路線) 成人 4,000日元 兒童 2,000日元 10:30出發 成人 3,500日元 兒童 1,750日元 / 巴士票價 9:00出發(善光寺參拜路線) 全票 4,000日圓 兒童票 2,000日圓 10:30出發 全票 3,500日圓 兒童票 1,750日圓 / 버스 이용 요금 9:00 출발(젠코지 절 참배 코스) 어른 4,000엔 어린이 2,000엔 10:30 출발 어른 3,500엔 어린이 1,750엔

Children's fare applies to children of elementary school age (ages 6 to 11).

※兒童乘車費用的適用對象為小學生(6歲以上不滿12歲)。 / ※兒童票適用於小學生(6歲以上、未滿12歲)。 / ※어린이 요금 대상은 초등학생(만 6세 이상 만 12세 미만) 어린이입니다.



The 10:30am departure course does not include time to see Zenkōji Temple. For both the 9:00am and 10:30am courses, visitors should arrange for their own lunch at Obuse. Customers will have to pay their own admission fees for Hokusai Museum and Togakushi Ninja Museum.

## Runs

Specified dates from Friday, April 5 to Saturday, November 30, 2019

As listed on the calendar

### April

Sun	Mon	Tue	Wed	Thu	Fri	Sat
1	2	3	4	5	6	
7	8	9	10	11	12	13
14	15	16	17	18	19	20
21	22	23	24	25	26	27
28	29	30				

### May

Sun	Mon	Tue	Wed	Thu	Fri	Sat
			1	2	3	4
5	6	7	8	9	10	11
12	13	14	15	16	17	18
19	20	21	22	23	24	25
26	27	28	29	30	31	

### June

Sun	Mon	Tue	Wed	Thu	Fri	Sat
						1
2	3	4	5	6	7	8
9	10	11	12	13	14	15
16	17	18	19	20	21	22
23	24	25	26	27	28	29
30						

### July

Sun	Mon	Tue	Wed	Thu	Fri	Sat
	1	2	3	4	5	6
7	8	9	10	11	12	13
14	15	16	17	18	19	20
21	22	23	24	25	26	27
28	29	30	31			

### August

Sun	Mon	Tue	Wed	Thu	Fri	Sat
				1	2	3
4	5	6	7	8	9	10
11	12	13	14	15	16	17
18	19	20	21	22	23	24
25	26	27	28	29	30	31

### September

Sun	Mon	Tue	Wed	Thu	Fri	Sat
1	2	3	4	5	6	7
8	9	10	11	12	13	14
15	16	17	18	19	20	21
22	23	24	25	26	27	28
29	30					

### October

Sun	Mon	Tue	Wed	Thu	Fri	Sat
		1	2	3	4	5
6	7	8	9	10	11	12
13	14	15	16	17	18	19
20	21	22	23	24	25	26
27	28	29	30	31		

### November

Sun	Mon	Tue	Wed	Thu	Fri	Sat
					1	2
3	4	5	6	7	8	9
10	11	12	13	14	15	16
17	18	19	20	21	22	23
24	25	26	27	28	29	30



**Travel to Nagano on the Shinkansen!**

前往長野的旅程, 請搭乘新幹線! / 前往長野旅遊就搭乘新幹線! / 나가노 여행은 신칸센으로!



