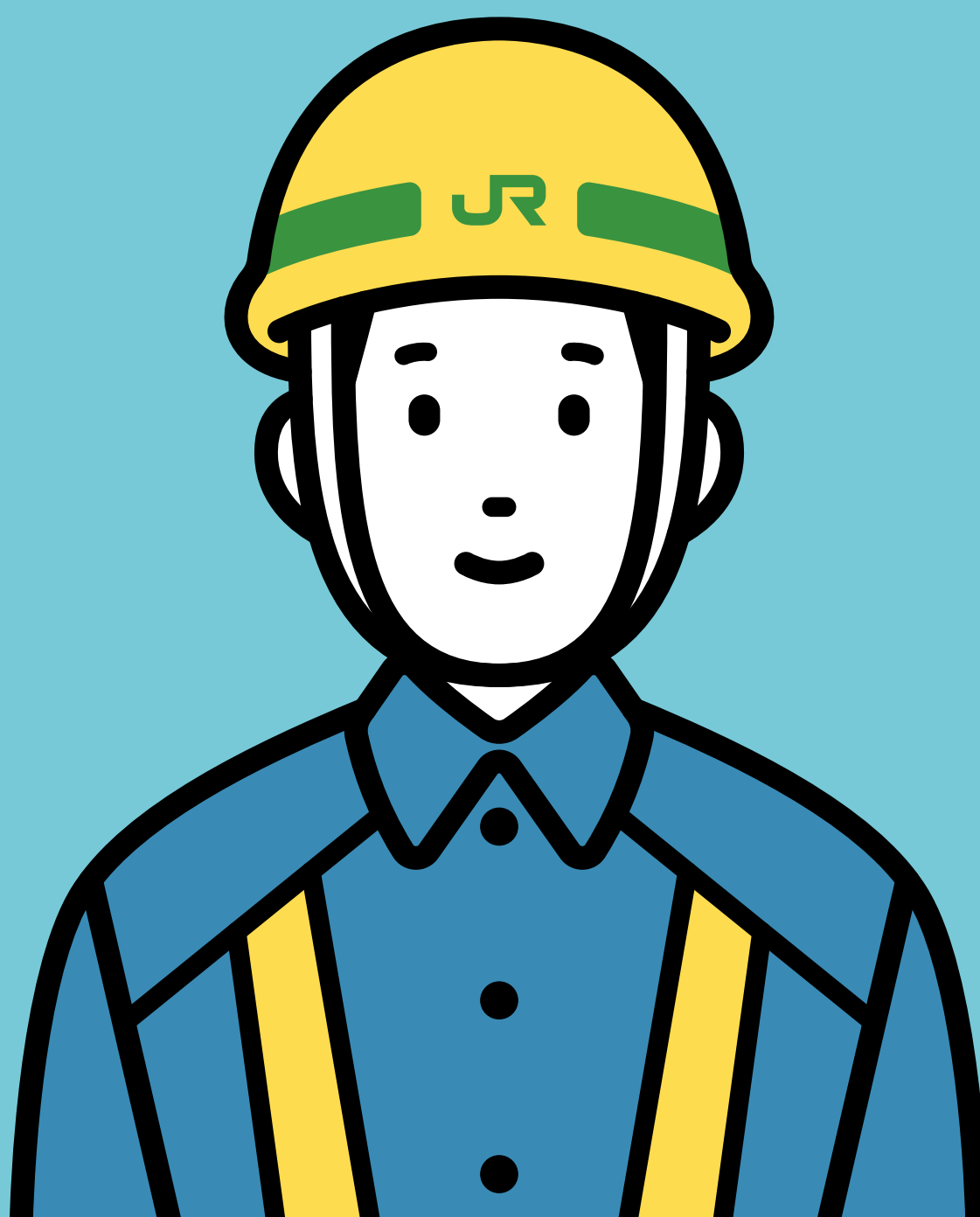


JR East answers your questions

Natural Disasters

Q & A



Thank you for using JR East.

JR East may suspend service or limit train speeds to keep passengers safe in response to a natural disaster.

Unfortunately, such steps may result in train delays.

This pamphlet describes JR East's various efforts in response to natural disasters.

We appreciate your understanding and cooperation.



[^ Back to Contents](#)

Why do trains operate at slower speeds or **suspend services temporarily when the wind is strong?**



Strong wind is dangerous for a train. Additionally, if train **services are disrupted due to objects blown by strong winds,** services may continue to be suspended even after the wind subsides.



Fallen Trees



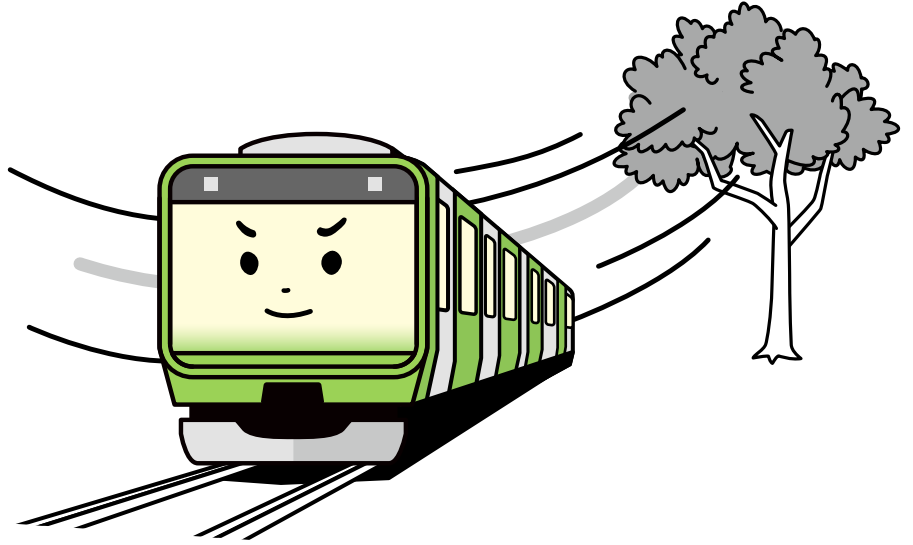
Objects Blown onto Overhead Lines

Service Restrictions During Strong Winds

Normal Service

When the wind does not impede safe service

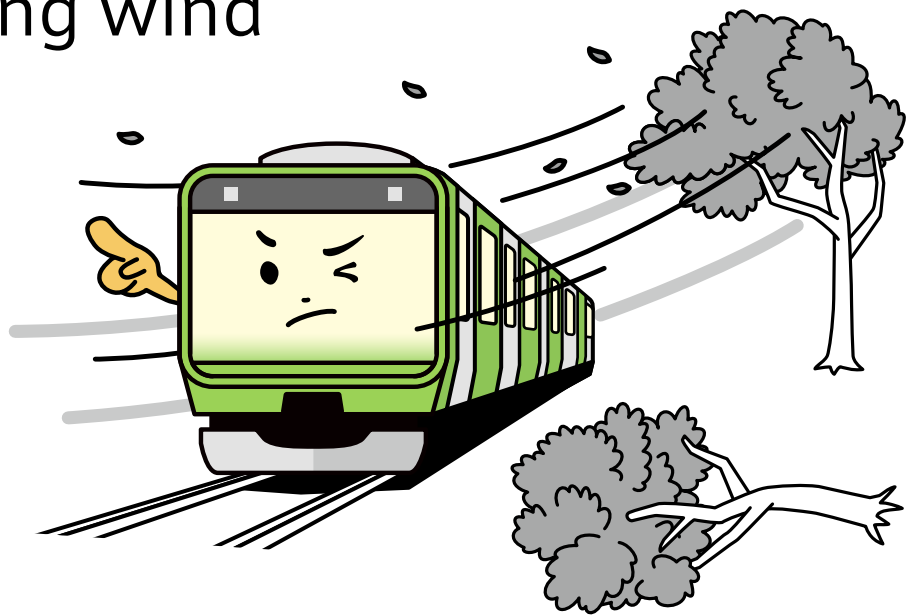
Operating as usual!



Speed Restrictions

When trains need to operate with care due to strong wind

Operating at slower speeds while observing wind conditions!



Service Suspended

Continued strong winds make train services dangerous

Operation will resume when the wind dies down!

