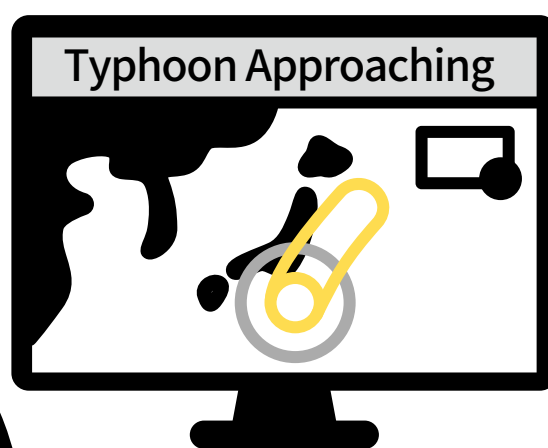
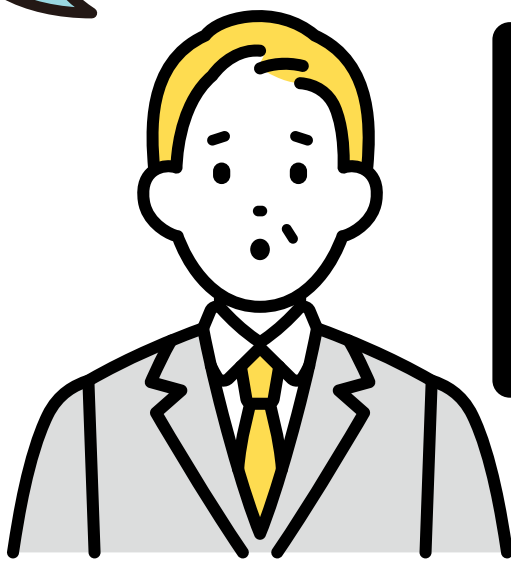


I've heard that **train services may be preemptively canceled** when **a major typhoon** is approaching. Why?



If there is a risk of serious damage

to railway facilities over a wide area,

JR East may preemptively cancel train services

based on its assessment of information from

the Japan Meteorological Agency and private

weather information services. Information on such

measures will be announced widely to the public.



[^ Back to Contents](#)

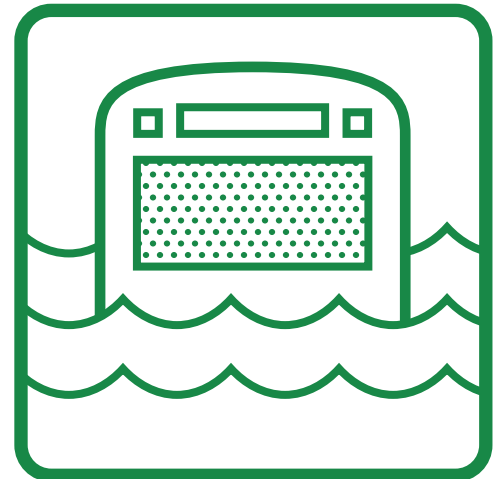
Damage Expected from a Major Typhoon



Rail Washout



Bridge Collapse

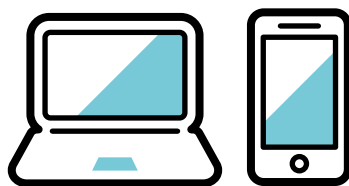


Train Flooding

Suspension of Train Services Upon Approach of a Major Typhoon to the Greater Tokyo Area And Resuming of Services



① Notice of suspension of services



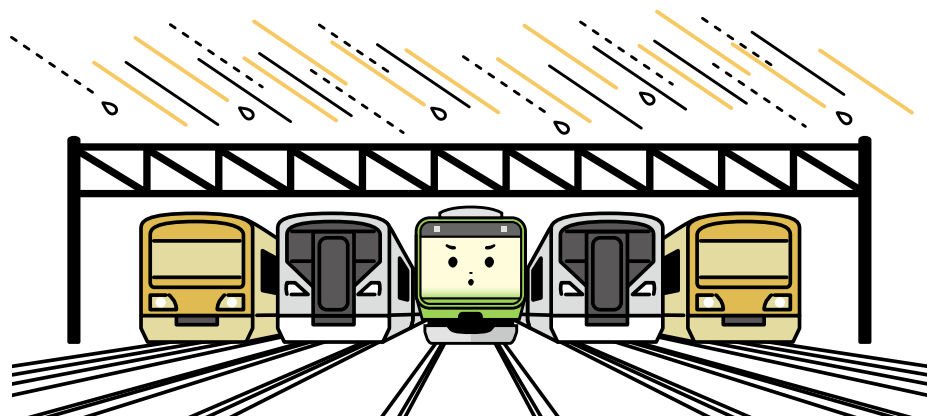
Announced on the website, in train stations, on social media, etc.



② Trains stored at various facilities



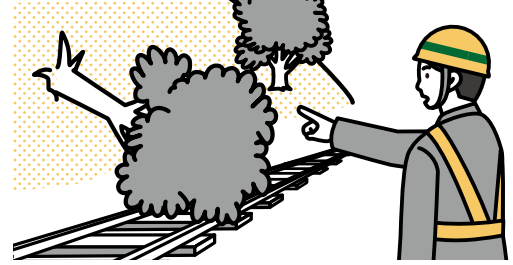
③ Service suspended



[^ Back to Contents](#)



④ After fierce wind and rain stops, rail lines are inspected for blown objects and fallen trees, and rail facilities are inspected for abnormalities



⑤ Trains are released steadily from storage facilities and final checks for safe services are conducted by running empty trains



⑥ The number of trains is gradually increased to normal levels and services are resumed



Stations may be very crowded right after services resume, since trains will be lower in number and operating less frequently than usual.

This is why JR East notifies **passengers of the time in which reliable services** resume as the time of the resuming of services.

Service information will be provided regularly concerning matters such as the suspension and resuming of services.

