

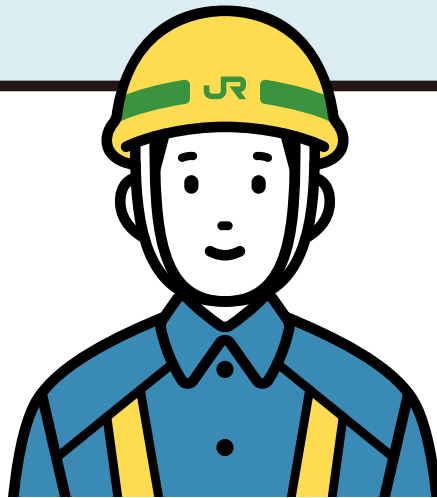
[^ Back to Contents](#)

Why do trains operate at slower speeds or suspend services temporarily **during heavy rain?**



This is necessary **to ensure train safety**, since heavy rain could **damage railway facilities in various ways**.

Additionally, services may be suspended temporarily due to poor visibility in some cases.



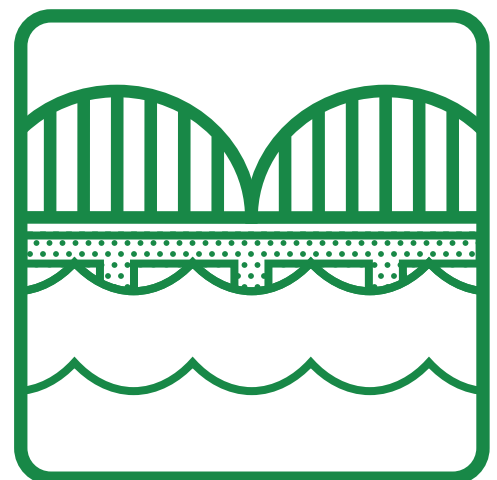
Examples of the Effects of Heavy Rain on Train Service



Mudslides



Flooded Tracks



Rising River Levels

Service Restriction Standards During Heavy Rain

Normal Service

When the rain does not impede safe service

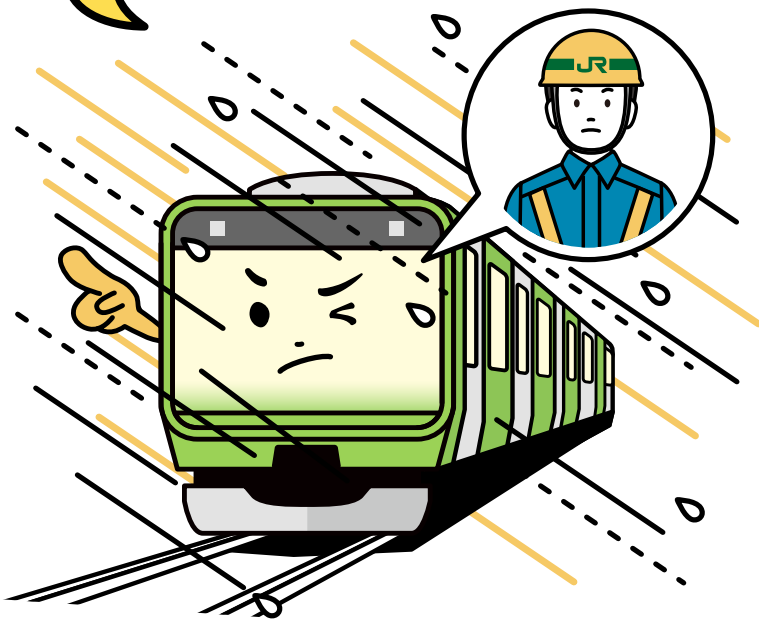
Operating as usual!



Speed Restrictions

When temporary heavy rain or prolonged rainfall could affect railway facilities

Operating at slower speeds!
Facility staff will board the trains to inspect facilities periodically!



Facility staff will inspect facilities periodically on predetermined sections of the line*.



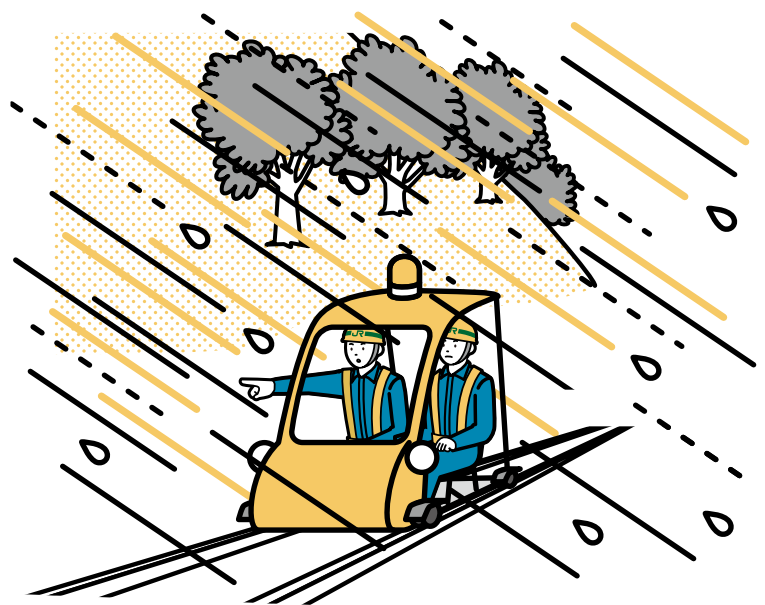
*Inspection of predetermined sections of the line is conducted to concentrate on inspecting locations with particularly high disaster risk.

Service Suspended

When there is a high risk that continued and prolonged rainfall, such as torrential downpours, could damage railway facilities

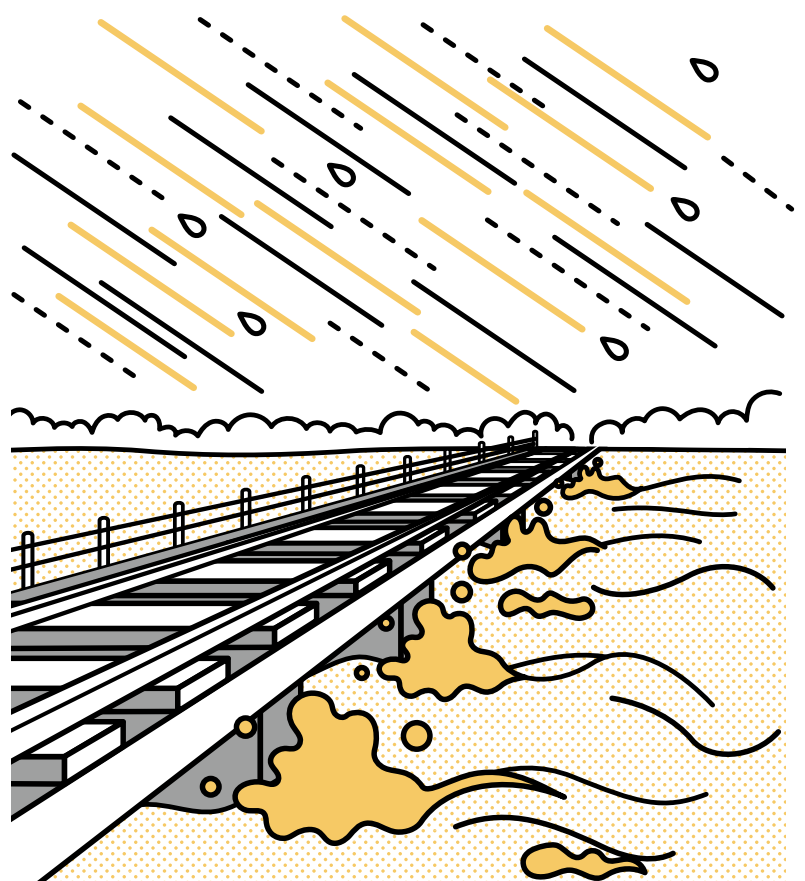
Services will resume when the rain weakens and safety has been confirmed!

The safety of tracks, slopes, and other railway facilities will be checked at regularly intervals.



* Thresholds for restricted services due to rain are determined in accordance with the conditions of railway facilities on each line.

Services also may be suspended due to rising river levels.



[^ Back to Contents](#)

I understand why train services are suspended during heavy rainfall, but **why doesn't it resume right away after the rain stops?**



Services will resume after staff have **inspected the conditions of railway facilities on the entire line** after rainfall drops below the restricted service threshold. It may take some time to resume services after the rain stops, since rainfall absorbed **into the earth still may affect railway facilities.**



Efforts to Prevent Rain-Induced Disasters

Slope Protection Work

Slope protection work is intended to improve safety and reduce the duration of service restrictions by preventing mudslides during heavy rainfall in susceptible locations such as loose slopes.



Disaster Detection

Disaster detection equipment is installed in locations susceptible to mudslides and rockslides in order to detect risks early and prevent accidents.

