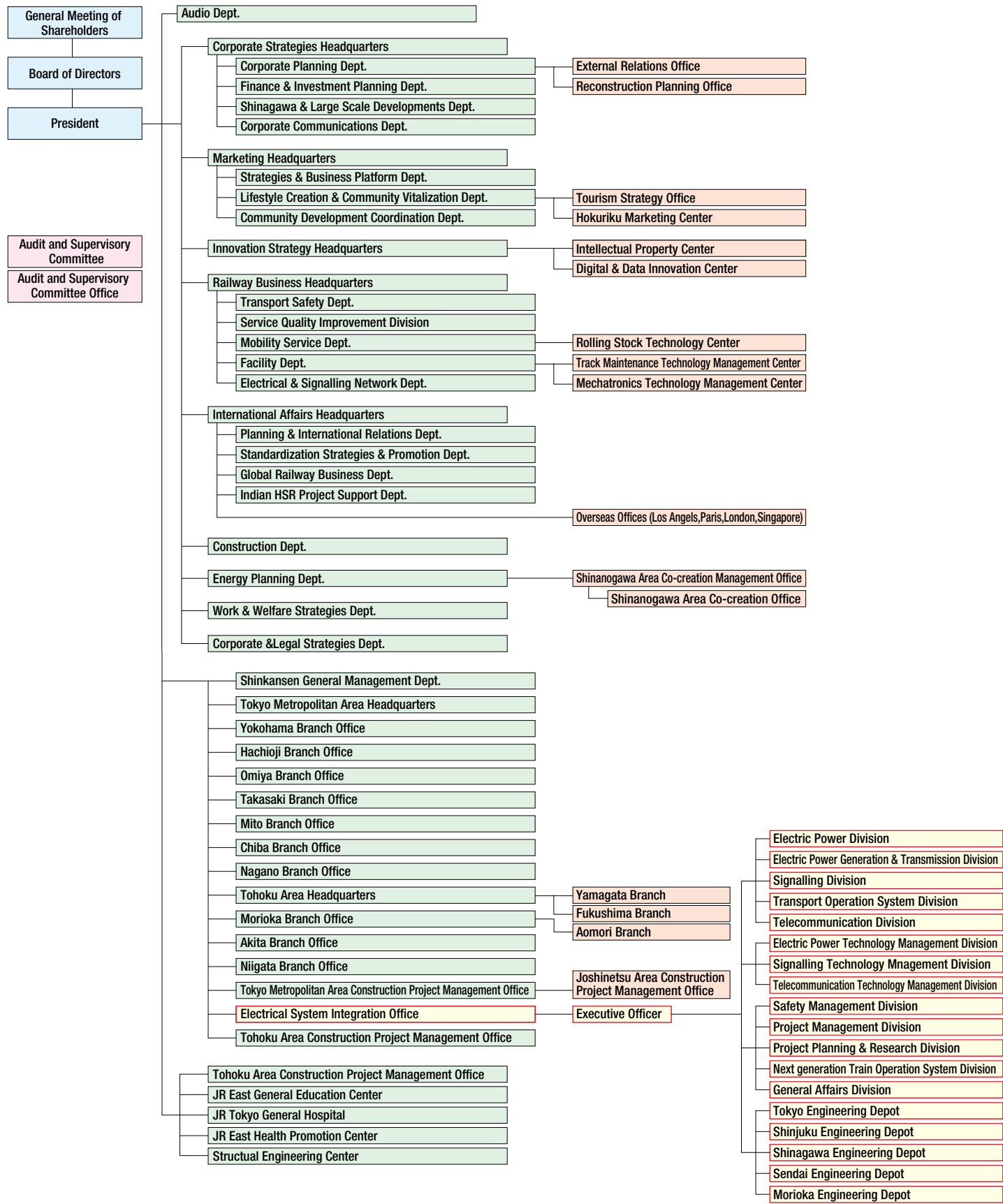


Organization



As of February 2024

History

1987	Apr.	<ul style="list-style-type: none">JR East started from japan national railway and Tokyo electric construction office started as a professional for electrical equipment.Sendai construction office started.
1990	Mar.	<ul style="list-style-type: none">Keiyo line(between Tokyo and Soga) started.Chuo line[Rapid](between Tokyo and Nakano) and Chuo line[local](between Nakano and Chiba) ATS-P utilization started.
	Jun.	<ul style="list-style-type: none">shin-ojiya power plant utilization started.
1991	Mar.	<ul style="list-style-type: none">Electrification of Sagami line (between Meigasaki and Hashimoto) completed.
	Jun.	<ul style="list-style-type: none">Tohoku-Joetsu shinkansen (between Tokyo and Ueno) started.
1992	Jul.	<ul style="list-style-type: none">Yamagata shinkansen started.
1994	Dec.	<ul style="list-style-type: none">Rikuzenharanomachi electrical substation at Senseki line utilization started.
1995	Jul.	<ul style="list-style-type: none">Layering platform at Chuo line at Tokyo Station started.
	Nov.	<ul style="list-style-type: none">COSMOS(Computerized Safety, Maintenance and Operation Systems of Shinkansen) started.Train Supervisory Control and data acquisition system for Tokyo metropolitan area started.
1996	Mar.	<ul style="list-style-type: none">Electrification of Hachiko line (between Hachioji and Komagawa) completed.
	Dec.	<ul style="list-style-type: none">Chuo line (between Tokyo and kofu) ATOS utilization started.
1997	Mar.	<ul style="list-style-type: none">Akita Shinkansen started.
	Oct.	<ul style="list-style-type: none">Nagano Shinkansen started.
1998	Dec.	<ul style="list-style-type: none">Akabane Station elevated.
1999	Mar.	<ul style="list-style-type: none">Chuo-line integrated power transmission cable utilization started.
2000	Apr.	<ul style="list-style-type: none">Renewal of remote control system on local line substitution finished.
	Dec.	<ul style="list-style-type: none">COSMOS-SCADA started.
2001	Oct.	<ul style="list-style-type: none">Renovation of traction substations in the Tokyo area finished.
	Dec.	<ul style="list-style-type: none">Senzan-line ATS-Ps utilization started.
2002	Feb.	<ul style="list-style-type: none">Atre UENO started.
	Jun.	<ul style="list-style-type: none">Renovation of power supply in the Tokyo area finished.
	Nov.	<ul style="list-style-type: none">Digital radio communication system on Tohoku and Joetsu shinkansen started.
	Dec.	<ul style="list-style-type: none">Direct operation between Saikyo-line and Rinkai-line started.
2003	Apr.	<ul style="list-style-type: none">Renovation of power supply(Substation equipment) in the Tokyo area finished.
	Dec.	<ul style="list-style-type: none">Keihintohoku line D-ATC utilization started.
2004	Sep.	<ul style="list-style-type: none">Renovation of power supply(Power line) in the Tokyo area finished.
2005	Apr.	<ul style="list-style-type: none">Electronic interlocking equipment in Sendai station utilization started.
2006	Feb.	<ul style="list-style-type: none">Renewal of signal system on Chuo line(between Tokyo and Takao) finished.
	Oct.	<ul style="list-style-type: none">Tohoku Shinkansen DS-ATC utilization started.
2007	Jan.	<ul style="list-style-type: none">Renamed for Tokyo electrical construction and system integration office from Tokyo electric construction office.
	Feb.	<ul style="list-style-type: none">Network signal control system in Musashino line utilization started.
	Mar.	<ul style="list-style-type: none">Sendai airport access line started.
	Aug.	<ul style="list-style-type: none">Tohoku Shinkansen DS-ATC utilization started.Digital radio communication system on Yamanote line started.
2010	Feb.	<ul style="list-style-type: none">Shonan-Shinjuku Line (between Osaki and Tsurumi) signaling equipment simplified and integrated equipment utilization started.
	Mar.	<ul style="list-style-type: none">Yokosuka Line Musashi-Kosugi new station opens.
	Nov.	<ul style="list-style-type: none">Chuo Line Partially Elevated (Between Mitaka and Tachikawa).
	Dec.	<ul style="list-style-type: none">All Tohoku Shinkansen lines open (extended to Shin-Aomori).
2011	Mar.	<ul style="list-style-type: none">Great East Japan Earthquake.
	Apr.	<ul style="list-style-type: none">All Tohoku Shinkansen lines resumed operation (recovery after 49 days from the Great East Japan Earthquake).
	Oct.	<ul style="list-style-type: none">Senseki Line ATACS service started.
2012	Feb.	<ul style="list-style-type: none">Disaster prevention system (PreDAS) update completed.
	Oct.	<ul style="list-style-type: none">Tokyo Station Marunouchi Station Building Illumination Started.
	Dec.	<ul style="list-style-type: none">Kesennuma BRT service started.
2013	Feb.	<ul style="list-style-type: none">Orme Line Haijima Electrical substation Energy storage system utilization started.
	Mar.	<ul style="list-style-type: none">Tohoku Line Urawa Station elevated.
	Nov.	<ul style="list-style-type: none">Senseki Line Tagajo Station. Overhead crossing grade separation opened.
2014	Feb.	<ul style="list-style-type: none">Keiyo Car Depot. Solar power system utilization started.
2015	Mar.	<ul style="list-style-type: none">Hokuriku Shinkansen (between Nagano and Kanazawa) opened.Ueno Tokyo Line. Power Distribution System opened.Updated power distribution equipment for Shinkansen.
	Mar.	<ul style="list-style-type: none">Hokkaido-Shinkansen opened.JR-Shinjuku Miraina Tower opened.
	Jun.	<ul style="list-style-type: none">Keiyo Line Network-signal-control-Sys. Started.
2016	Aug.	<ul style="list-style-type: none">Senseki Line Digital Radio started.
	Sep.	<ul style="list-style-type: none">Keiyo Line ATOS utilization started.
	Dec.	<ul style="list-style-type: none">Akita-Shimohama wind farm utilization started.
2017	Nov.	<ul style="list-style-type: none">Saikyo Line ATACS utilization started.
	Dec.	<ul style="list-style-type: none">Tohoku Shinkansen substation equipment update started.
2018	Jan.	<ul style="list-style-type: none">Tohoku Line (Kuroiso Station) interlock and low cost power systems utilization started.
	Apr.	<ul style="list-style-type: none">Shinetsu Line Niigata station elevated.
	Aug.	<ul style="list-style-type: none">Tohoku Line (Kuroiso Station-Ishikoshi Station) Operation Sys. replacement completed.
	Nov.	<ul style="list-style-type: none">Kawasaki Station widening work completed.
2020	Mar.	<ul style="list-style-type: none">Takanawa-gateway Station opened.
	Jul.	<ul style="list-style-type: none">Tohoku Shinkansen implemented measures for Cellular Service Improvement in Tunnel.
	Oct.	<ul style="list-style-type: none">Koumi Line wireless train control Sys. Utilization Started.
2021	May.	<ul style="list-style-type: none">Senjyu Power Plant Equipment Replacement Completed and Utilization Started.
	Jun.	<ul style="list-style-type: none">Kawasaki Thermal Power Plant (New No.1) Renewal Completed and Utilization Started.
	Sep.	<ul style="list-style-type: none">Reconstruction of JR-EAST Sendai office building completed.
2022	Jan.	<ul style="list-style-type: none">Anayama Substation Power Storage Devices Utilization started.
	May.	<ul style="list-style-type: none">Hamamatsucho Station widening work completed
	Jun.	<ul style="list-style-type: none">Renamedf for Electrical system integration Office from Tokyo electrical construction and system integration office
2023	Mar.	<ul style="list-style-type: none">Keiyo Line Makuharitoyosuna Sta. opened,Tazawako Line Maegata Sta. Opened
	Dec.	<ul style="list-style-type: none">Tazawako Line CTC main utilization started