



April 21, 2026

East Japan Railway Company

Partnership between Welcome Suica Mobile, Mobile Suica and Samsung— Link to Samsung Wallet for expanded Suica features

SAMSUNG Wallet | **Suica**

- East Japan Railway Company is working to make our Welcome Suica Mobile app for inbound visitors available on Samsung Galaxy smartphones, planned for release by Samsung Electronics (hereinafter, “Samsung”), in the first half of 2027.
- This will enable inbound visitors to use Android™ smartphones purchased overseas to seamlessly access transportation such as trains and buses, and to shop, immediately upon arrival to Japan.
- We are also working to implement support of Samsung Pay payment within the Mobile Suica and Welcome Suica Mobile apps.
- JR East is enhancing the features of Welcome Suica Mobile and Mobile Suica to promote both security and enjoyment for inbound visitors.

1. Future Features

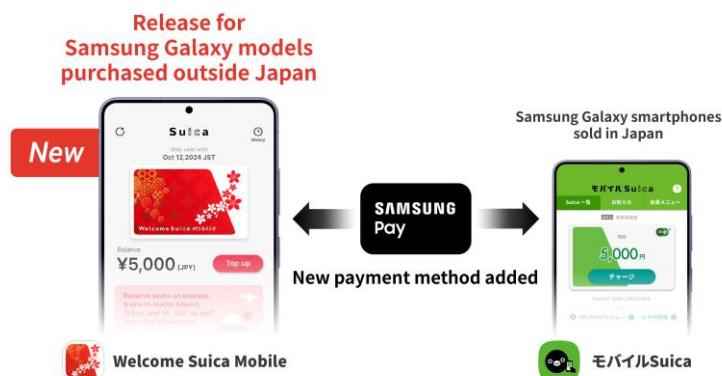
(1) Suica Support for Samsung Galaxy Smartphones Released Overseas

Samsung Galaxy smartphones sold from 2027 onwards will support issuance of Suica cards via Welcome Suica Mobile.



*Regions for release and compatible models will be announced as details are finalized.

(2) Payment via Samsung Pay

Samsung Pay payments will be supported for topping up (charge), as well as for purchase of tickets for Green Cars on local trains, discount tickets, and commuter passes on Mobile Suica and Welcome Suica Mobile.



The following features will be implemented on Welcome Suica Mobile (Samsung Galaxy smartphones) in the first half of 2027.

	Welcome Suica Mobile (Samsung Galaxy smartphones) 	Reference: Welcome Suica (card type) 
Personalized / non-personalized	Non-personalized	Non-personalized
E-money	✓	✓
Discount tickets	✓	✓
Refund of remaining balance (e-money)	x*	x*
Valid for	180 days from date of Suica issuance	28 days from the start of use
Topping up (adding funds)	<ul style="list-style-type: none"> • Via credit card registered on Samsung Pay • Via cash at designated e-money machine, etc. 	<ul style="list-style-type: none"> • Via cash at an automatic ticket vending machine, etc.
Deposit	Not required	Not required

Key: ✓: Supported; x: Not supported

*Remaining balance is not refundable. Remaining balance expires with expiration of card.

2. Launch Date

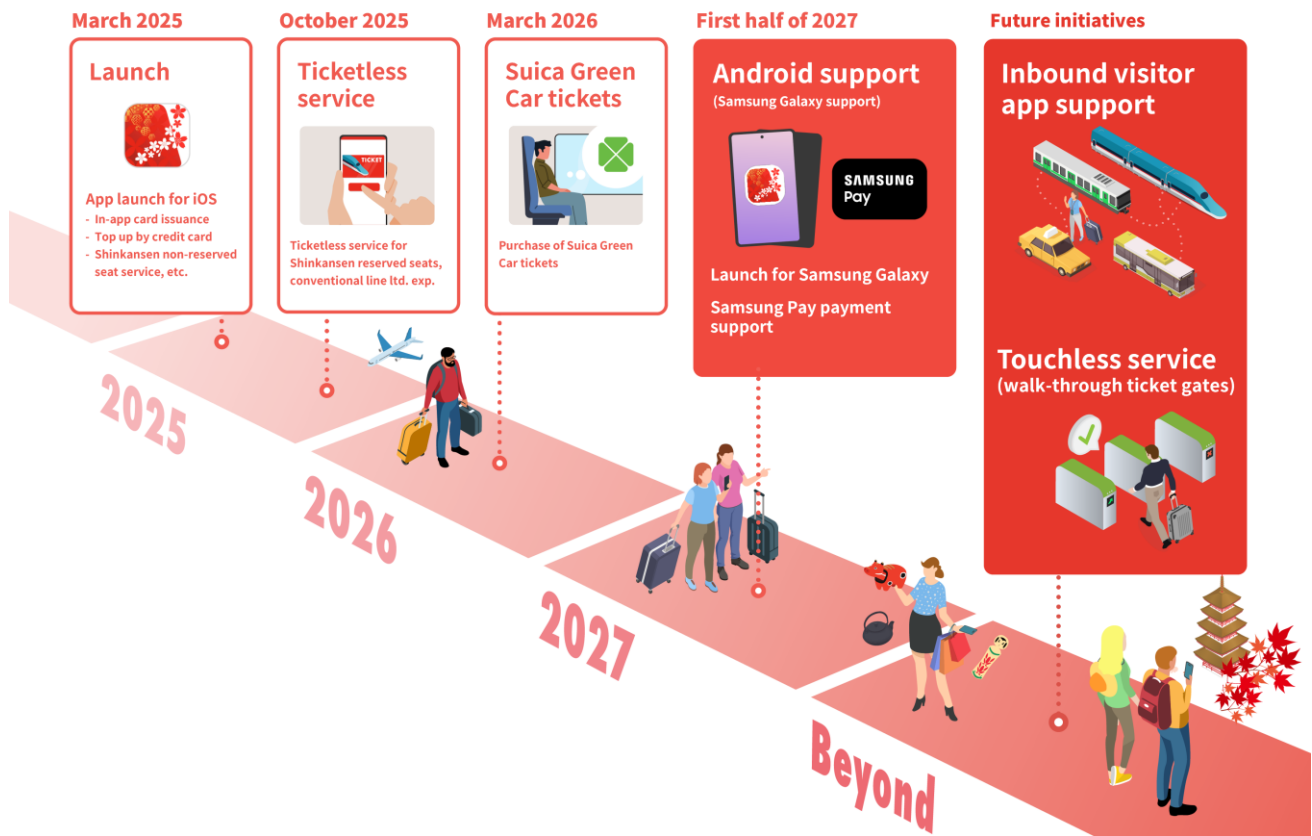
First half of 2027

3. Details

To be disclosed at a later date.

4. Welcome Suica Mobile Roadmap

- Welcome Suica Mobile for iOS launched in March 2025. It is now possible to download the app, issue and top up (charge) Suica before entering Japan, which allows for seamless use of transportation and to shop upon arrival.
- In October 2025, we linked with JR-EAST Train Reservation to facilitate smooth reservations and ticketless service for reserved seats of conventional line limited express trains and Shinkansen. In March 2026, we added support for purchase of Suica Green Car tickets, required for travel in Green Cars on local trains.
- We are working to improve convenience by ensuring walk-through ticket gates and Suica use on all our lines becomes commonplace for inbound visitors.



*All images in this press release are for illustrative purposes only. Screens are subject to change.

*The Suica penguin is the mascot for JR East's Suica.

*Suica and Welcome Suica are registered trademarks of East Japan Railway Company.

*Samsung Galaxy is a trademark or registered trademark of Samsung Electronics Co., Ltd.

*Android is a trademark of Google LLC.