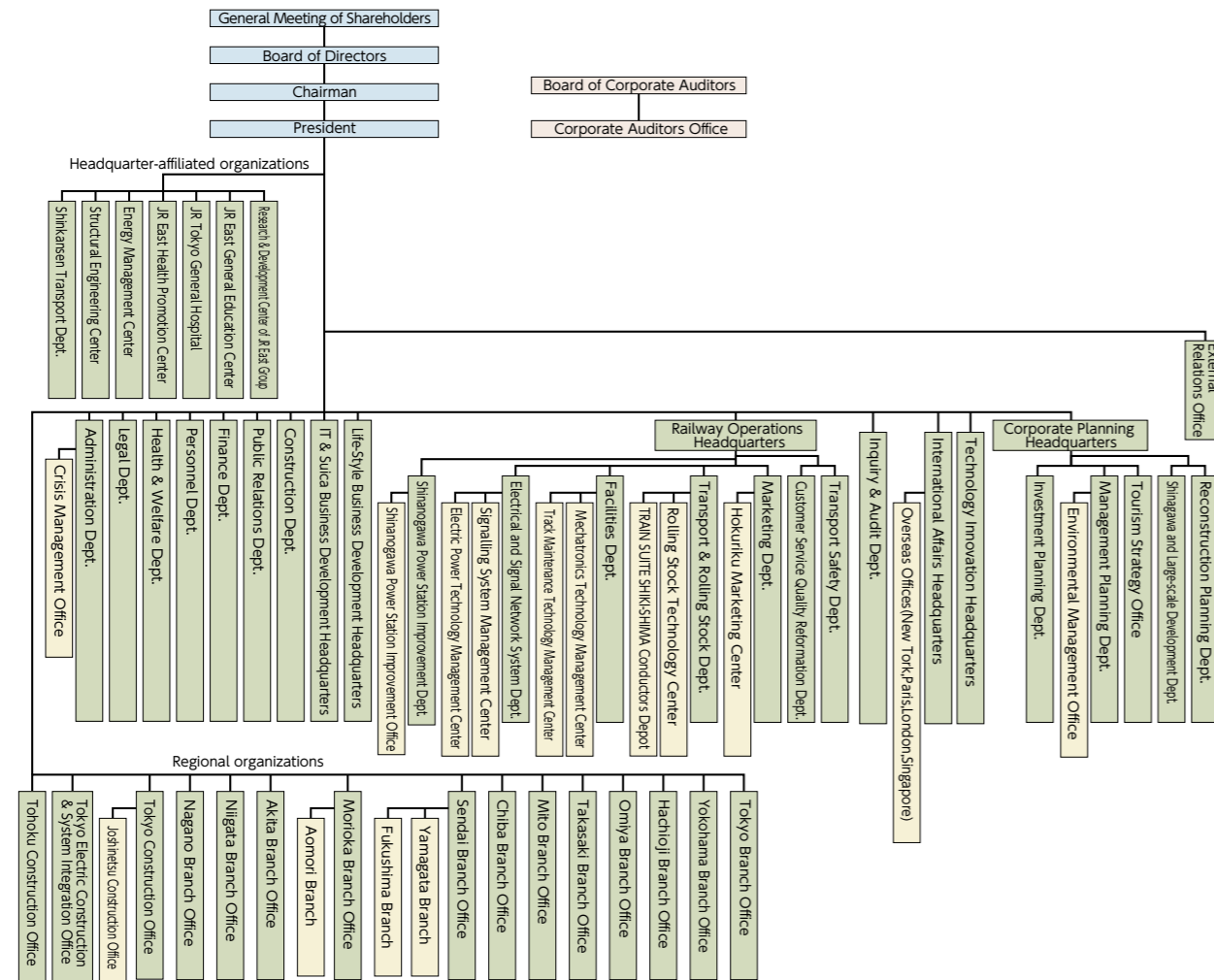


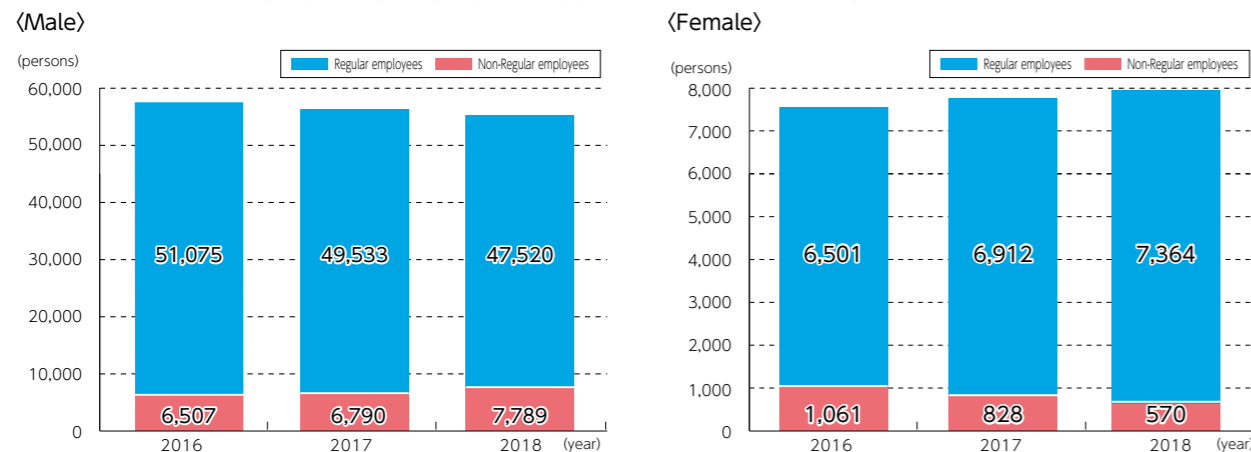
Organization

As of June, 22, 2018



Personnel-related data

[Total number of employees by employment type and gender (As of April 1, 2018)]



* No. of employees in this report includes those seconded.

[Total number of new employees and resignees(New employees are those employed within the fiscal year (Regular employees only))] (persons)

	New employees			Resignees		
	FY2016	FY2017	FY2018	FY2016	FY2017	FY2018
Male	1,325	1,320	1,292	2,759	2,873	3,340
Female	584	579	572	114	130	130

	New employees			Resignees		
	FY2016	FY2017	FY2018	FY2016	FY2017	FY2018
Under 30 years of age	1,575	1,498	1,563	99	79	103
30 to 50 years of age	328	386	296	124	158	164
51 years of age and over	6	15	4	2,650	2,766	3,203

	New employees			Resignees		
	FY2016	FY2017	FY2018	FY2016	FY2017	FY2018
Headquarters	169	153	153	127	150	183
Tokyo Branch Office	440	438	470	482	476	464
Yokohama Branch Office	180	196	158	208	184	204
Hachioji Branch Office	116	127	139	152	137	147
Omiya Branch Office	151	151	154	218	201	191
Takasaki Branch Office	79	76	84	136	184	215
Mito Branch Office	55	48	59	137	167	171
Chiba Branch Office	155	180	177	160	199	268
Sendai Branch Office	150	148	153	415	477	542
Morioka Branch Office	82	76	79	306	242	305
Akita Branch Office	61	62	40	148	163	241
Niigata Branch Office	99	88	73	161	209	294
Nagano Branch Office	74	57	42	101	129	160
Shinkansen Transport Dept.	—	—	—	3	6	1
Tokyo Construction Office	28	27	32	62	40	39
Tokyo Electric Construction & System Integration Office	40	40	35	17	15	24
Tohoku Construction Office	30	32	16	40	24	21

[Average annual training time per employee] (Time, person)

	FY2016	FY2017	FY2018
Total annual training hours	2,601,210	2,039,400	1,809,560
Number of employees	58,551	57,576	56,445
Average annual training hours per employee	44	35	32

[Number of employees by area and gender (As of April 1, 2018)] (persons)

	Male			Female		
	2016	2017	2018	2016	2017	2018
Headquarters	3,395	3,449	3,691	938	947	982
Tokyo Branch Office	9,478	9,222	9,019	1,475	1,570	1,654
Yokohama Branch Office	4,109	4,043	3,932	572	628	681
Hachioji Branch Office	3,295	3,257	3,196	401	434	485
Omiya Branch Office	3,877	3,778	3,688	425	461	504
Takasaki Branch Office	2,358	2,245	2,106	267	288	304
Mito Branch Office	2,240	2,147	2,027	208	220	240
Chiba Branch Office	3,887	3,816	3,694	566	607	640
Sendai Branch Office	5,191	4,876	4,507	565	578	615
Morioka Branch Office	3,190	3,013	2,777	231	257	286
Akita Branch Office	2,309	2,198	1,995	167	184	198
Niigata Branch Office	3,257	3,118	2,886	258	273	294
Nagano Branch Office	2,324	2,242	2,129	206	215	225
Shinkansen Transport Dept.	220	217	—	11	17	—
Tokyo Construction Office	694	672	646	77	87	107
Tokyo Electric Construction & System Integration Office	825	833	836	92	101	104
Tohoku Construction Office	426	407	391	42	45	45
Total	51,075	49,533	47,520	6,501	6,912	7,364

From FY2019, Shinkansen Transport Dept. (male: 221; female: 20) is included in Head Office.

[Ratio of employees eligible for collective bargaining agreements (as of April 1, 2018)]

	2016	2017	2018
Number of union members	50,546	49,467	20,857
Number of employees	57,576	56,445	54,884
Ratio	87.8%	87.6%	38.0%