



Environment

CONTENTS

Basic Concept for Ecology Promotional Activities	98
Environmental management	100
Measures to prevent global warming	106
Measures for resource circulation ..	116
Chemical substance management ..	120
Environmental Conservation Activities along Railway Lines	121

Basic Concept for Ecology Promotional Activities

■ Basic philosophy and basic policies for promoting ecological activities (established May 1992, partially revised in September 2012)

The JR East Group formalized its basic philosophy and policies in 1992 and established activity guidelines in 1996. Our specific environmental protection measures are based on these.

【Basic philosophy】

- The entire JR East Group, as a member of society, will diligently strive to balance global environmental protection with our business activities.

【Basic policies】

- To contribute to creating a global environment for the future through our business activities for our customers and local communities.
- To develop and provide the technology needed to protect the global environment.
- To maintain our concern for the global environment and raise global environmental awareness of our employees.



Activity guidelines for the promotion of ecological activities (established March 1996 and partially revised in February 1998 and September 2012)

- 1. While working to reduce total energy consumption by enhancing energy efficiency and introducing cleaner forms of energy, we endeavor to reduce CO2 emissions, a contributor to global warming.
2. We ensure the proper management and processing of environmental pollutants and ozone-depleting substances, in compliance with laws and regulations.
3. We ensure the appropriate processing of various types of waste generated at our offices, establishments, stations, trains, and other locations.
4. We respect the natural environment, which nurtures diversified life, and endeavor to reduce noise and vibrations caused by train operations.
5. We are looking carefully at the impact of railways on the environment once again, in order to enhance the environmental superiority of railways.

Committee on Ecology

Established in 1992 as a top management organization to promote environmental activities and chaired by the executive vice president of JR East, the Committee on Ecology Promotion surveys the environmental impact of business activities, sets environment-related targets, implements environmental conservation activities and monitors progress toward target achievement, which is also examined by top management. Furthermore, in July 2010, the "Environmental Management Office" was established in our Management Planning Dept., and oversees environmental management for the entire JR East Group.

[Organizational structure to promote environmental management (as of April 1, 2017)]

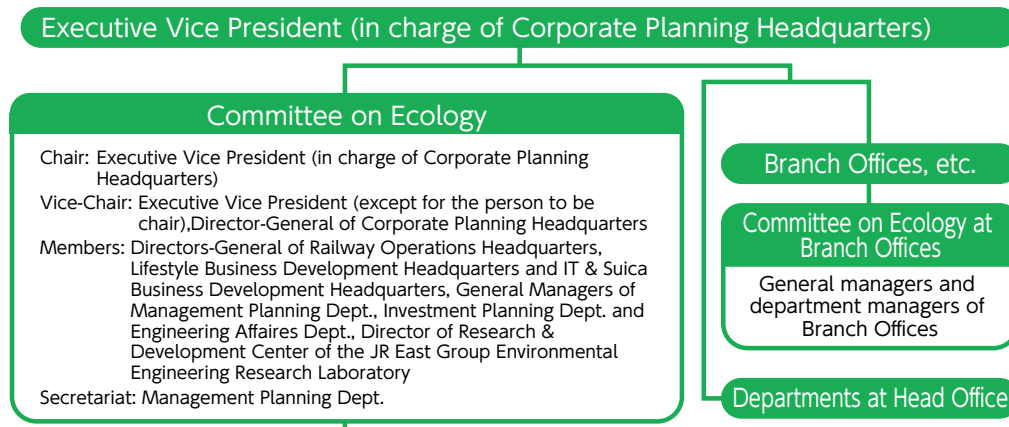


Table with 2 columns: Activity Category and Description. Rows include Environmental management, Measures to prevent global warming, Measures for resource circulation, Chemical substance management, and Environmental activities along railway lines.

Compliance with environmental laws and regulations

There were no major violations of environment-related laws and regulations resulting in penalties in FY2017.