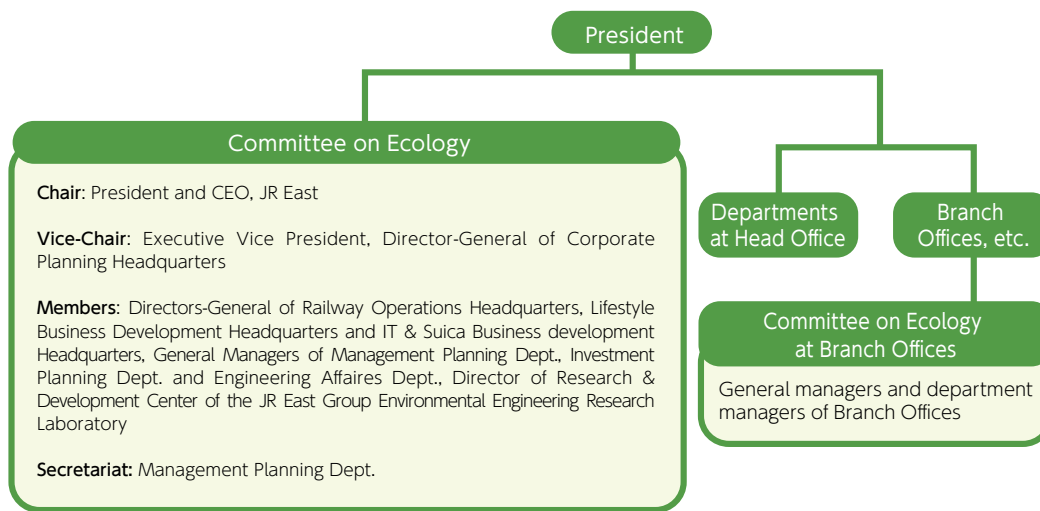


Environmental Management Structure

Environmental Management Structure

Established in 1992 as a top management organization to promote environmental activities and chaired by the president and CEO of JR East, the Committee on Ecology Promotion surveys the environmental impact of business activities, sets environment-related targets, implements environmental conservation activities and monitors progress toward target achievement, which is also examined by top management. In July 2010, the “Environmental Management Promotion Office” was established in our Management Planning Dept., and oversees environmental management for the entire JR East Group.

Organizational structure to promote environmental management (as of April 1, 2014)



Department name	Main activities	Working group name
Environmental management	Promotion of environment conservation activities at each work place, promotion of environment management as a whole group, management of environmental targets and publication of environmental activities, etc.	* JR East Eco Activities WG * JR East Group environment management promotion WG
Measures to prevent global warming	Reduction of CO ₂ emissions through reduced electricity use and new energy technologies, reduction of CO ₂ emission volume throughout the entire transport system, etc.	* Eco station WG * Eco railcar WG * Railway usage promotion WG * Illuminance optimization WG
Measures for resource circulation	Recycling of wastes from stations and trains, reduction and recycling of industrial waste, eco-friendly procurement, etc.	* Station & train waste WG
Chemical substance management	Management of ozone depleting substances, chemical substances, PCB, etc.	* PCB waste WG
Environmental activities along railway lines	Measures against noise, utilization of spring water in tunnels, conservation and utilization of railway trees, proper use of herbicide, etc.	* Railway trees conservation & utilization WG * Proper herbicide usage WG

Creating an environment-conscious culture

JR East believes that it is important to promote environmental activities with clear goals established for the entire JR East Group, and to have every employee actively involved. To build a culture in which all employees participate voluntarily, we are expanding the scale of our environmental activities by promoting “JR East Eco Activities” at each work place, developing leaders through environmental education, and sharing recognition of outstanding environmental efforts through the presentation of awards.

In-house environmental education

For effective environmental management, it is essential that all employees have appropriate knowledge on environmental issues. We provide environmental education lectures to our employees in training in order to develop environmental activities in JR East and group companies. Through these lectures, we aim to expand the scale of our environmental activities. In FY2007, to enhance environmental activities at each group company, we began an “Environmental management training” program for people in charge of environmental matters in those companies.

■ Environmental education & training system

Education of environmental-activity promoters at organizations of JR East and group companies
Environment management practical training
<ul style="list-style-type: none"> ● Persons trained: those responsible for environment at local organizations, etc. ● Objective: improvement of ability in environment-related matters as trainers to field offices, etc. ● Number of participants: 15
Environment countermeasures (noise & vibration) expert training
<ul style="list-style-type: none"> ● Persons trained: those responsible for environment at each Branch Office ● Objectives: learning of basic knowledge about relevant rules and regulations for noise and vibration ● Number of participants: 21
Implementation of training and lectures in Branch Offices

Internal environmental audits

At our General Rolling Stock Centers, in-house auditors are trained through external training programs, and conduct routine audits at the centers in order to evaluate environmental activities.

■ ISO14001-certified facilities

Certified facilities	Year and month of certification	Certified facilities	Year and month of certification
<JR East>		<Group companies>	
Kawasaki Thermal Power Plant	Mar-01	Niitsu Rolling Stock Manufacturing Factory (Current: J-TREC Niitsu Plant)	Feb-99
Tokyo General Rolling Stock Center	Mar-01	East Japan Eco Access Co., Ltd.	Nov-99
Omiya General Rolling Stock Center	Feb-02	East Japan Transport Technology Co., Ltd. (Omiya Branch)	Feb-02
Shinkansen General Rolling Stock Center	Nov-02	Nippon Restaurant Enterprise Co., Ltd. (manufacturing section)	Sep-02
Koriyama General Rolling Stock Center	Dec-03	Nagano Railway Servicing Co., Ltd. (Current: JR Nagano Railway Services Co., Ltd.)	Apr-06
Nagano General Rolling Stock Center	Feb-05	JR East Mechatronics Co., Ltd.	Mar-08
Akita General Rolling Stock Center	Jul-05	East Japan Marketing & Communications, Inc.	Aug-08
		Tohoku Rolling Stock Machinery Co., Ltd.	Dec-10

Thorough management of chemical substances

JR East is working to establish a system to prevent environmental accidents by more rigidly managing chemical substances. We prepared emergency response manuals for on-site locations such as our thermal power plants and General Rolling Stock Centers that handle chemical and hazardous substances. We are also preparing ourselves to respond properly to any contingencies by holding workshops and training sessions on how to handle these substances, and ensuring that related information reaches all concerned personnel.

Compliance with environmental laws and regulations

There were no major violations of environment-related laws and regulations resulting in penalties in FY2014.