

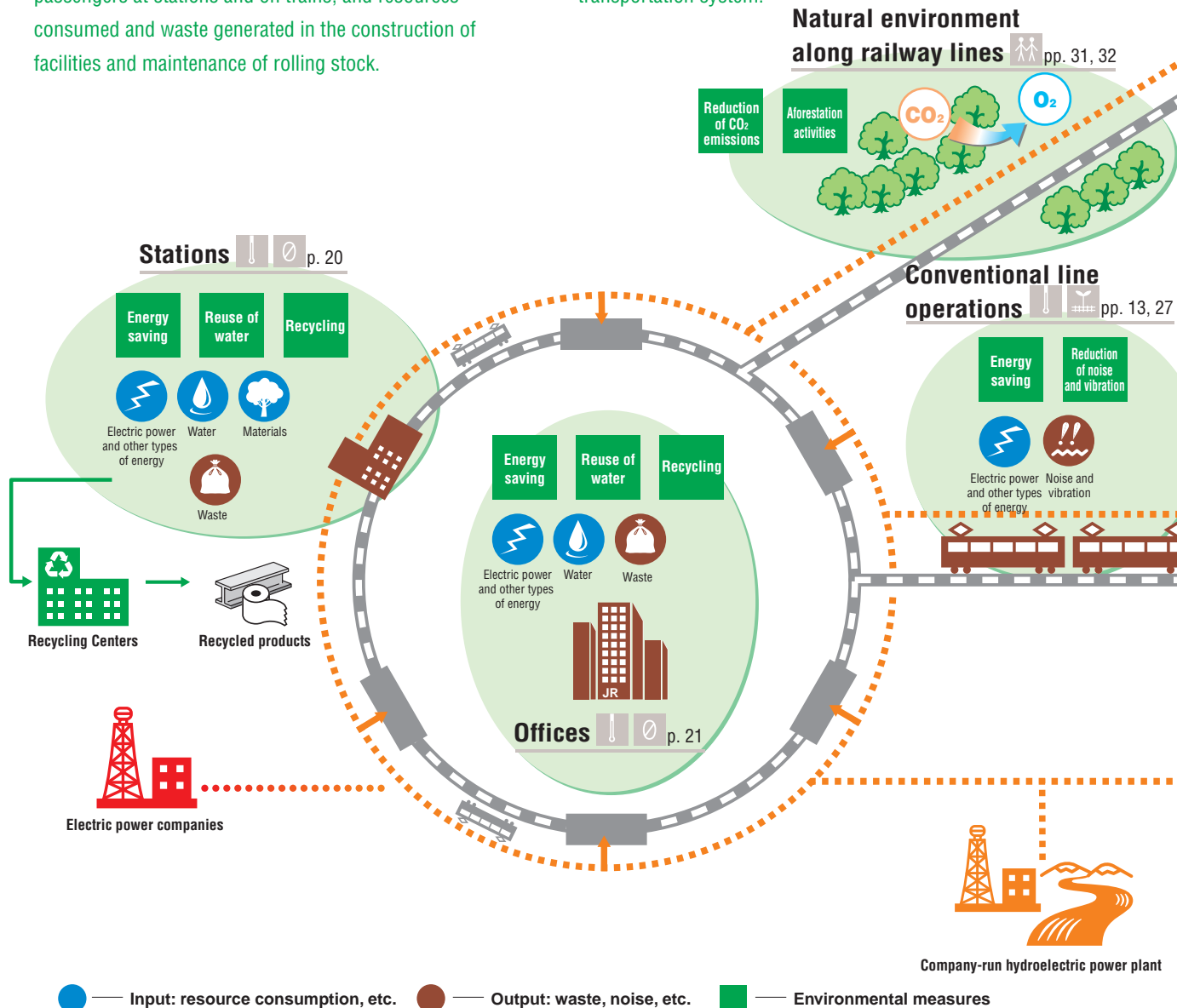
Environmental Impact of JR East's Business Operations/Measures

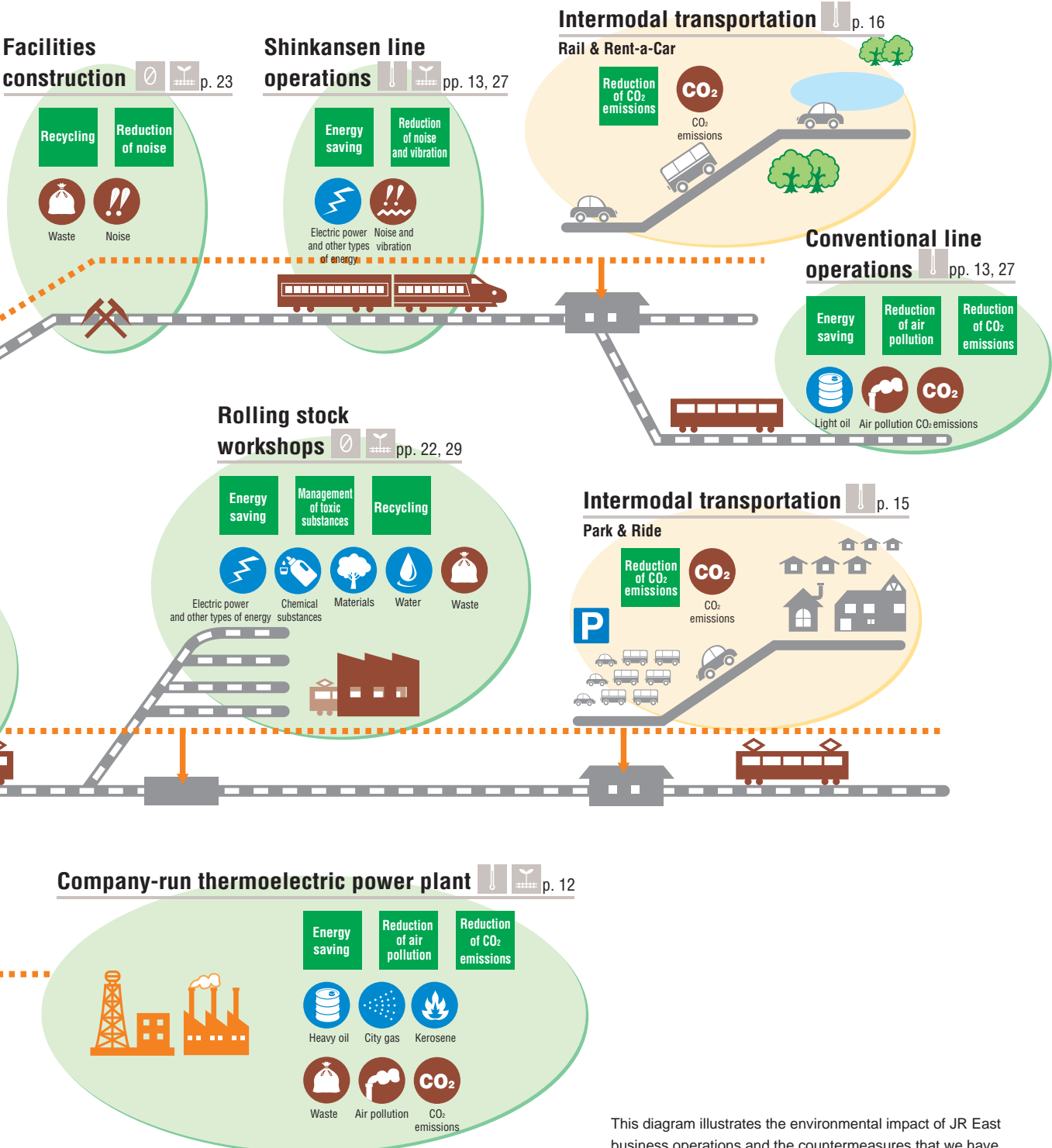
JR East operates in the eastern half of Japan's main island, Honshu, which includes the metropolitan Tokyo area. We are responsible for approximately 7,500 km of railway lines, 1,700 stations, and 13,000 units of rolling stock. We are proud to offer a variety of services affecting many aspects of daily life, with a focus on railway transportation.

Regarding the environmental impact of our operations, rail transportation inherently consumes a large amount of energy, while generating a significant amount of noise and vibration. Also of concern are refuse discarded by passengers at stations and on trains, and resources consumed and waste generated in the construction of facilities and maintenance of rolling stock.

As for global warming, CO₂ emissions by Japan's transportation sector, including railways, are increasing every year. As an organization that occupies a significant position in passenger transportation, we at JR East Group are well aware of our responsibilities in regard to the reduction of CO₂ emissions.

JR East is therefore working to minimize the environmental impact of our operations, and to make our railways more convenient, so that the public can maximize the environmental advantages of our extensive public transportation system.





This diagram illustrates the environmental impact of JR East business operations and the countermeasures that we have adopted. Details are explained in this report.