

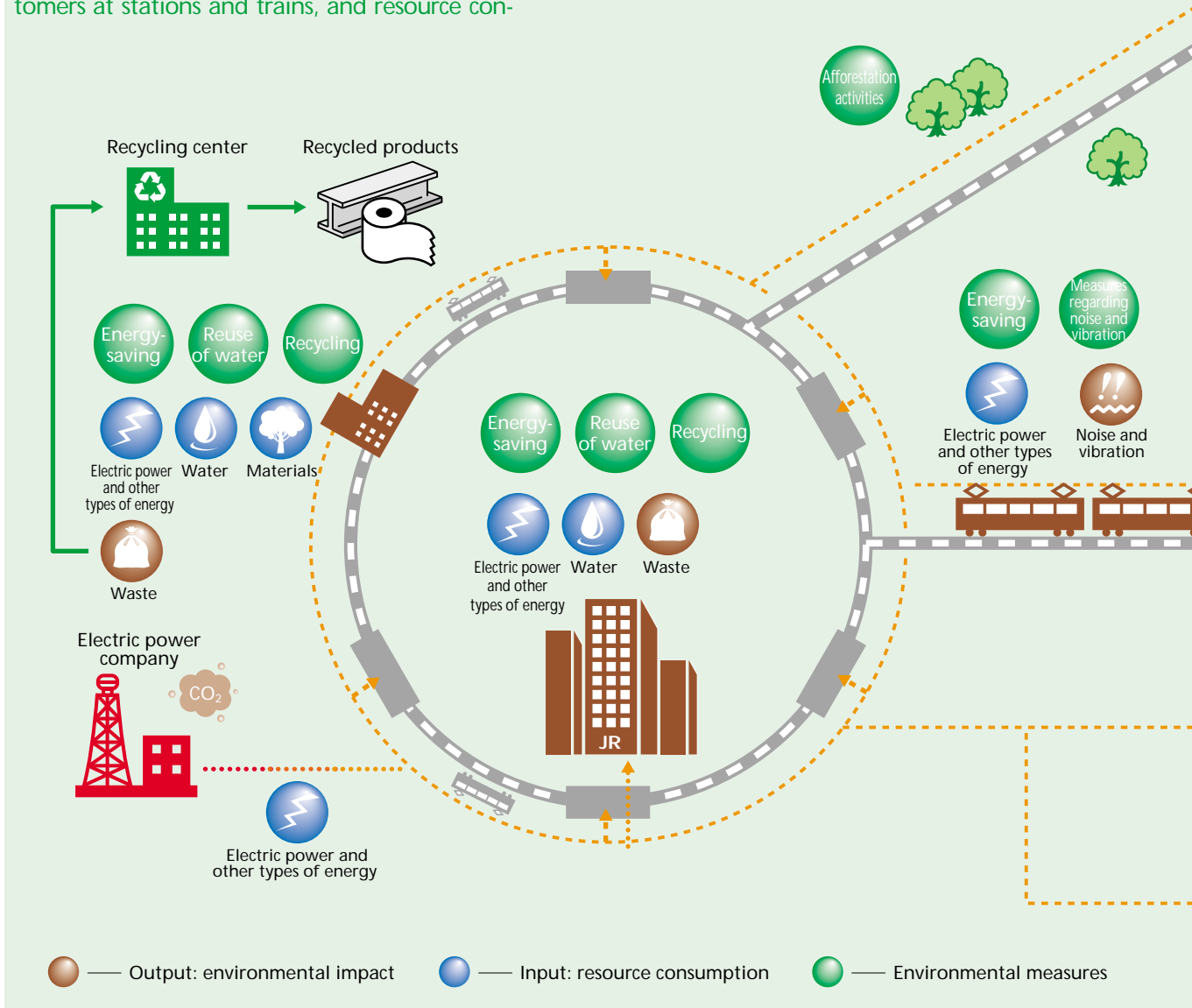
Environmental Impact of JR East's Business Operations/Measures

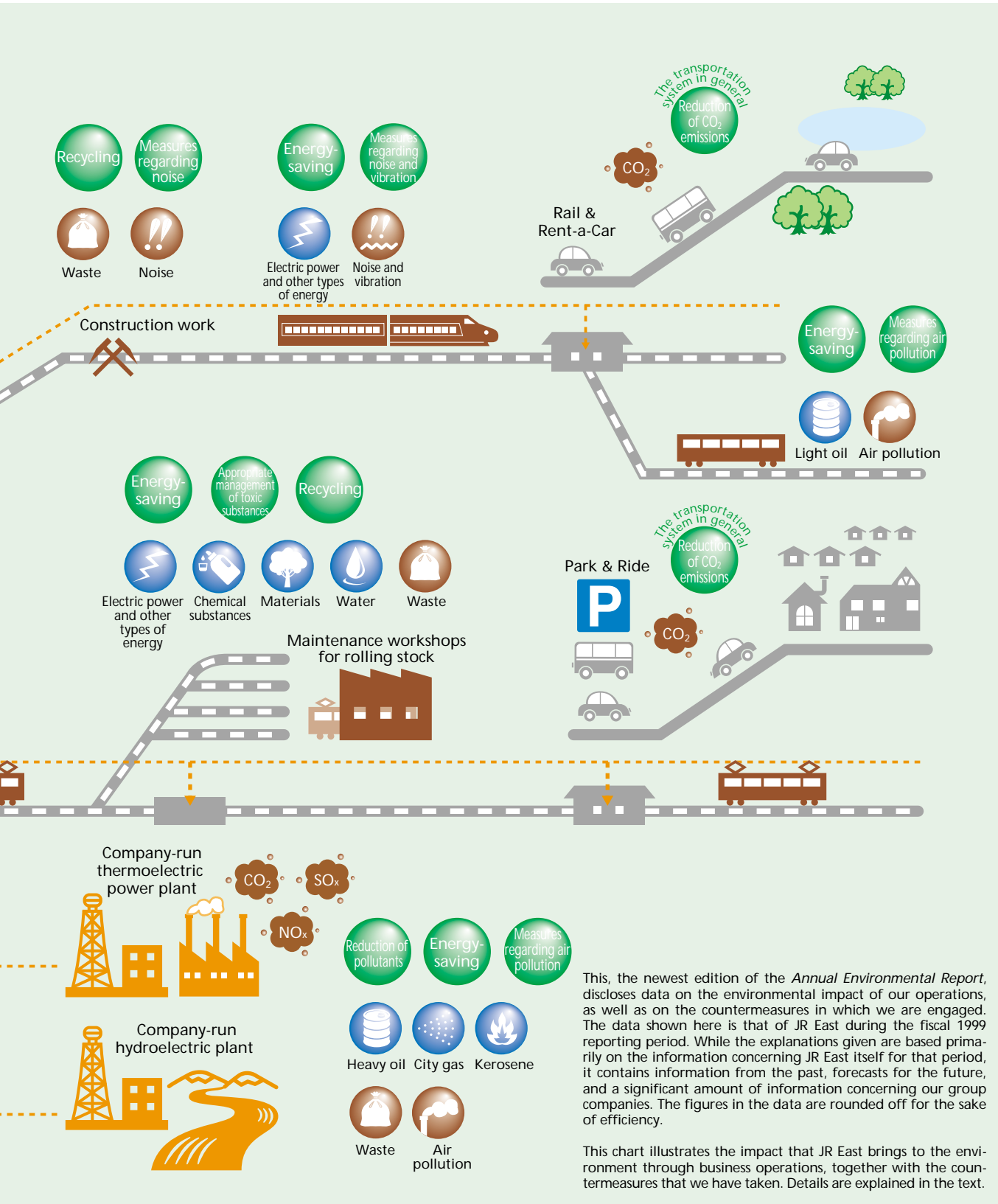
JR East operates in the eastern half of Japan's main island, Honshu, which includes the metropolitan Tokyo area. We have approximately 7,500 km of railway lines, 1,700 stations, and 13,000 units of rolling stock. On that basis, we are proud to offer a variety of services for many aspects of daily life, centering on railway transportation.

Various elements of environmental impact are considered with respect to our operations. Inherently, a large amount of energy is required in train operations. Added to this is the noise and vibration caused by trains, refuse disposed by customers at stations and trains, and resource consumption and waste generation in the maintenance of our trains, facilities, and equipment.

As for global warming, CO₂ emissions by Japan's transportation sector, including railways, have increased every year. As a company that occupies a significant position in passenger transportation, we at JR East Group are well aware of our responsibilities in that regard.

JR East is therefore working to minimize the aforementioned factors of environmental impact, and to make railways more convenient to use so that the public can maximize their advantages and environmental friendliness.





This, the newest edition of the *Annual Environmental Report*, discloses data on the environmental impact of our operations, as well as on the countermeasures in which we are engaged. The data shown here is that of JR East during the fiscal 1999 reporting period. While the explanations given are based primarily on the information concerning JR East itself for that period, it contains information from the past, forecasts for the future, and a significant amount of information concerning our group companies. The figures in the data are rounded off for the sake of efficiency.

This chart illustrates the impact that JR East brings to the environment through business operations, together with the countermeasures that we have taken. Details are explained in the text.