



Japan.  
Endless  
Discovery.



**EAST JAPAN  
GOLDEN ROUTE**  
HAYABUSA LINE

For Travelers with More Time

# JR EAST PASS

## Tohoku area

Unlimited rides on all Shinkansen and other JR trains in the "unlimited-ride area"! Enjoy a memorable trip with the top value JR EAST PASS!

Price

Adult

**48,000yen**

(12 years of age or older)

Child

**24,000yen**

(between 6 and 11 years of age)



Shin-Aomori

Aomori Airport

Akita

Akita Shinkansen

Morioka



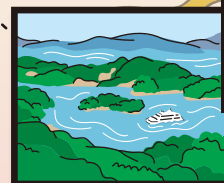
Yamagata

Yamagata Shinkansen

Sendai

Sendai Airport

Fukushima



Karuizawa

Hokuriku Shinkansen

Jōetsu Shinkansen

Tōkyō

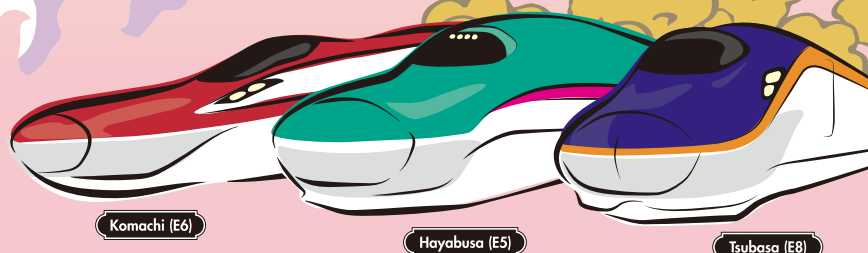
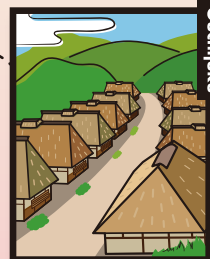
Haneda Airport

Ōmiya

Narita Airport

Ibaraki Airport

Tōhoku Shinkansen



On sale from **April 15, 2025**

Valid for use from **May 15, 2025**

Eligibility

Foreign nationals with a non-Japanese passport

Validity period

10 consecutive days

\*An original, valid passport belonging to the person who is using the rail pass must be presented at the time of purchase/exchange. Copies of passports and other substitute documents are not accepted.

\*Rail pass type cannot be changed following purchase.

\*You may purchase multiple rail passes if their periods of validity do not overlap.



With JR-EAST  
Train Reservation,  
using the pass  
is easy!

### 1 Purchase a pass

Purchases can be made online via JR-EAST Train Reservation.

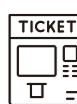


### 2 Pick up your pass

You can pick up a pass at reserved seat ticket vending machine with a passport reader in major stations.



Logo (example)



### 3 Use your pass

Please use the automatic ticket gate machines.



Tohoku area

[https://www.jreast.co.jp/multi/en/pass/eastpass\\_t.html](https://www.jreast.co.jp/multi/en/pass/eastpass_t.html) >>



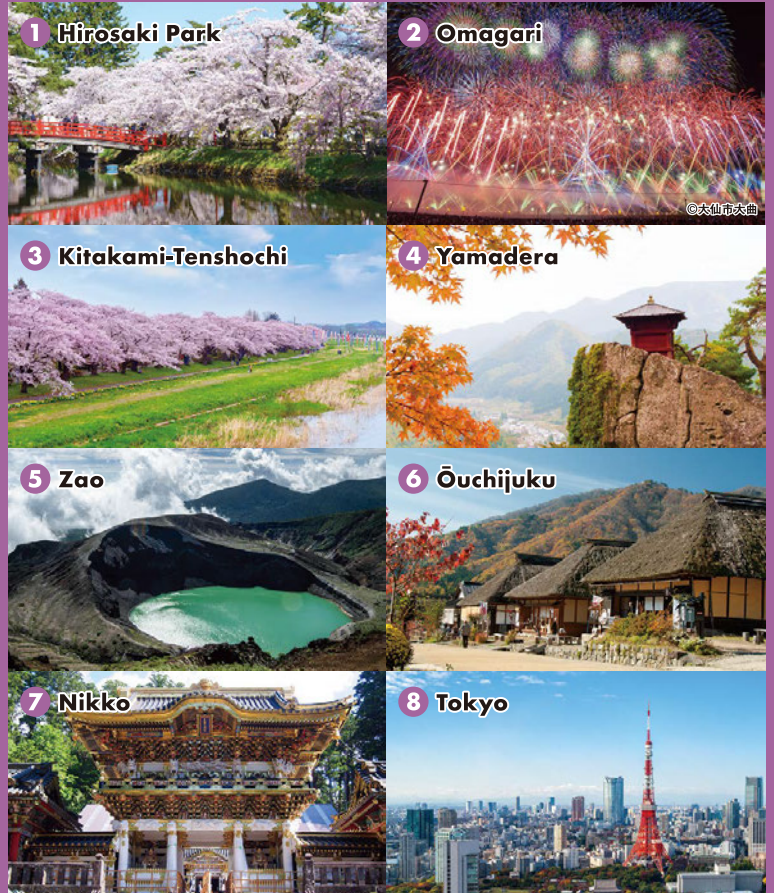


# JEP

## JR EAST PASS

— Tohoku area —

Blessed with magnificent mountains and beautiful lakes, and surrounded on three sides by the sea, the Tohoku region offers magnificent nature, traditional Japanese culture and delicious food. Tohoku is where you will find your favorite Japanese experience!



### Boarding zone

This pass allows unlimited rides using reserved seats on the ordinary cars of the limited express trains (including Shinkansen), express trains, and local trains on JR East train lines (including BRT), all the Izu Kyuko lines, all the Tokyo Monorail lines, all the Aomori Railway lines, all the Iwate Galaxy Railway (IGR) lines, Sendai Airport Transit lines, and JR Bus Tohoku as well as JR Bus Kanto buses (excluding expressway bus routes and some other bus routes) within the unlimited-ride area. In addition, the pass also allows unlimited rides using reserved seats on the ordinary cars of the limited express trains such as the Tobu Direct Limited Express "Nikko", "Kinugawa" and "SPACIA Kinugawa" trains.

\*1) The pass is not valid for limited express trains that arrive at and depart from the Tobu line stations. \*2) GALA Yuzawa Station is open only during winter and spring.

## How to Purchase a JR EAST PASS?



### 1 On the website

You can purchase passes via the JR-EAST Train Reservation website. Passes purchased via JR-EAST Train Reservation can conveniently be picked up at Reserved Seat Ticket Vending Machines!

**Quick & Easy**

<https://www.eki-net.com/en/jreast-train-reservation/Top/Index>



### 2 In Japan

#### 1 Reserved Seat Ticket Vending Machine with passport readers

Scan here for the locations that support Reserved Seat Ticket Vending Machines

[https://www.jreast.co.jp/e/downloads/pdf/passport\\_operation\\_e.pdf](https://www.jreast.co.jp/e/downloads/pdf/passport_operation_e.pdf)

\* Limited to Reserved Seat Ticket Vending Machines placed at the JR East stations that have the passport reader installed.  
\* Only compatible with passports with IC chips.



#### 2 Sales locations

Scan here for locations of ticket offices

[https://www.jreast.co.jp/multi/customer\\_support/](https://www.jreast.co.jp/multi/customer_support/)



### 3 At an overseas travel agency

You can purchase an Exchange Order before coming to Japan. After arrival in Japan, please exchange it for the pass.

## How to reserve a seat with Reserved Seat Ticket Vending Machine!

Reserved seats on Shinkansen, limited express trains, etc. can be reserved using Reserved Seat Ticket Vending Machines at JR EAST stations.



**Skip the line!**



Useful information, such as train schedules, the shortest routes to your destination and the location of JR Ticket Offices at each station, is available in English, Korean and Chinese.

**TEL. 050-2016-1603**

Office Hours 10:00 - 18:00 (except during the year-end/new year holidays)  
\*The phone number listed to the left is not a booking line.

Images are for illustrative purposes only.  
This information is current as of April, 2025. [2025/04]

<https://www.jreast.co.jp/multi/>



**JR East InfoLine**