



**JEP**  
JR EAST PASS  
— Nagano, Niigata area —

Travel and discover!



Japan.  
Endless  
Discovery.

**JR**  
JR-EAST

# JR EAST PASS

## Nagano, Niigata area

Unlimited rides on all Shinkansen and other JR trains in the "unlimited-ride area"!  
Enjoy a memorable trip with the top value JR EAST PASS!

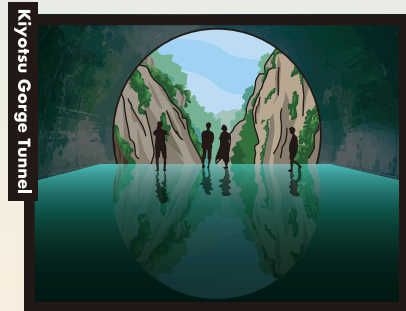
Price

Adult

**27,000yen**  
(12 years of age or older)

Child

**13,500yen**  
(between 6 and 11 years of age)



Kiyotsu Gorge Tunnel  
Ma Yansong / MAD Architects, "Tunnel of Light"  
(Echigo-Tsumari Art Triennale)



Dewa Sanzan Shrine



GALA Yuzawa



Karuizawa



Kamikochi



Matsumoto Castle



Kusatsu Onsen

Hokuriku Shinkansen

Jōetsu Shinkansen

Niigata

Nagano

Karuizawa

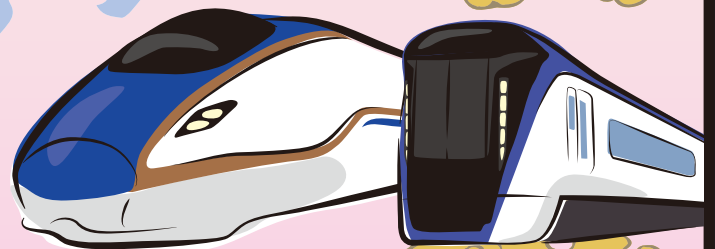
Ōmiya

Tōkyō

Haneda Airport

Narita Airport

Ibaraki Airport



Kagayaki (E7)

Series E353

Eligibility

Foreign nationals with a non-Japanese passport

Validity period

5 consecutive days

\*An original, valid passport belonging to the person who is using the rail pass must be presented at the time of purchase/exchange. Copies of passports and other substitute documents are not accepted.

\*Rail pass type cannot be changed following purchase.

\*You may purchase multiple rail passes if their periods of validity do not overlap.



With JR-EAST  
Train Reservation,  
using the pass  
is easy!

### 1 Purchase a pass

Purchases can be made online via JR-EAST Train Reservation.



### 2 Pick up your pass

You can pick up a pass at reserved seat ticket vending machine with a passport reader in major stations.



Logo (example)



### 3 Use your pass

Please use the automatic ticket gate machines.



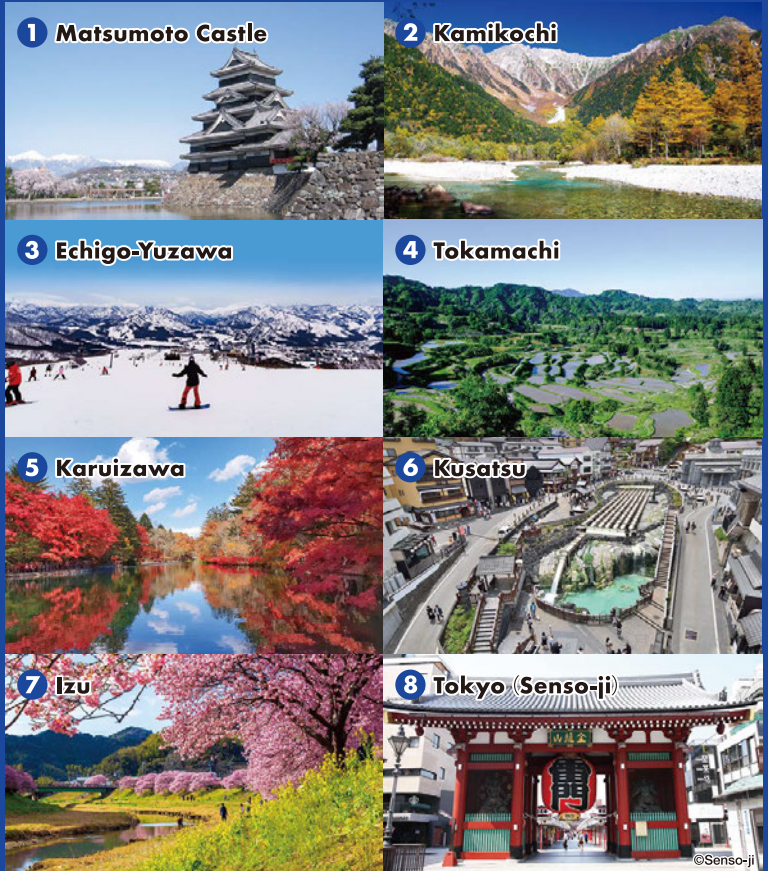


# JEP

## JR EAST PASS

— Nagano, Niigata area —

If you want to make the most of your trip in Eastern Japan, we recommend a visit to the Nagano and Niigata areas. Both are relatively close to Tokyo and offer a wide variety of sightseeing spots, including leisure facilities such as hot springs and ski resorts – all surrounded by stunning views.



### Boarding zone

This pass allows unlimited rides using reserved seats on the ordinary cars of the limited express trains (including Shinkansen), express trains, and local trains on JR East train lines, all the Izu Kyuko lines, all the Tokyo Monorail lines, all the Hokuetsu Express lines, the Echigo TOKImeki Railway line (between Naoetsu and Arai), and JR Bus Kanto buses (excluding expressway bus routes and some other bus routes) within the unlimited-ride area. In addition, the pass also allows unlimited rides using reserved seats on the ordinary cars of the limited express trains such as the Tobu Direct Limited Express "Nikko", "Kinugawa" and "SPACIA Kinugawa" trains.

\*1) If you are using the Tohoku Shinkansen "Hayabusa" or "Komachi," please purchase a separate limited express ticket. \*2) The pass is not valid for limited express trains that arrive at and depart from the Tobu line stations. \*3) GALA Yuzawa Station is open only during winter and spring.

## How to Purchase a JR EAST PASS?



### 1 On the website

You can purchase passes via the JR-EAST Train Reservation website. **Passes purchased via JR-EAST Train Reservation can conveniently be picked up at Reserved Seat Ticket Vending Machines!**

**Quick & Easy**

<https://www.eki-net.com/en/jreast-train-reservation/Top/Index>



### 2 In Japan

#### 1 Reserved Seat Ticket Vending Machine with passport readers

Scan here for the locations that support Reserved Seat Ticket Vending Machines

[https://www.jreast.co.jp/e/downloads/pdf/passport\\_operation\\_e.pdf](https://www.jreast.co.jp/e/downloads/pdf/passport_operation_e.pdf)

\* Limited to Reserved Seat Ticket Vending Machines placed at the JR East stations that have the passport reader installed.  
\* Only compatible with passports with IC chips.



#### 2 Sales locations

Scan here for locations of ticket offices

[https://www.jreast.co.jp/multi/customer\\_support/](https://www.jreast.co.jp/multi/customer_support/)



### 3 At an overseas travel agency

You can purchase an Exchange Order before coming to Japan. After arrival in Japan, please exchange it for the pass.

## How to reserve a seat with Reserved Seat Ticket Vending Machine!

Reserved seats on Shinkansen, limited express trains, etc. can be reserved using Reserved Seat Ticket Vending Machines at JR EAST stations.



**Skip the line!**

