

Unlimited travel on JR East trains for three days! Explore even more of Japan with this Pass!

Flexible 3-day PASS

You can choose any three days you like out of a month.

JR EAST PASS

SPECIAL

Adult: ¥10,000 Child: ¥5,000

With regular tickets (round-trip ticket with a reserved seat on an ordinary car during the regular season)...

Sample Itinerary

Tōkyō	←→	Narita Airport	¥5,880
+			
Tōkyō	←→	Niigata	¥20,540
Regular season ¥26,420 total			

Compare and see the difference!

JR EAST PASS SPECIAL (adult price)

¥10,000

Dramatic savings!

Period of Validity for Usage:

From 1 September 2009 to 31 December 2009

Period of Availability for Purchase: From 1 September 2009 to 1 December 2009

* Overseas sales of Exchange Orders will continue through 20 November 2009.

* Exchange Orders can be traded in through 1 December 2009.

● Purchase outside Japan

Before departing for Japan, purchase an Exchange Order at a designated sales office or agency. You can also purchase the pass from the JR EAST website. For details, please visit the following website:
<http://www.jreast.co.jp/eastpass/index.html>
 Note for travel agencies more details, please visit website:
<http://www.accessrail.com/east-japan-rail-pass.html>

● Purchase in Japan

Can be purchased at major railway stations in the JR EAST area. See the reverse side for details. For more information, visit our website.

● Eligibility for a JR EAST PASS SPECIAL

You must be an overseas tourist visiting Japan from abroad under the entry status of "Temporary Visitor." Only one ticket can be issued per person.

Benefit 1

You can receive a lovely gift at each of the major stations in the Niigata Area. See the reverse side of this pamphlet for details.

Benefit 2

You can get up to 50% off on tickets to Sado Island on the Sado Kisen Ferry!

Visit Niigata

Enjoy the beautiful natural surroundings of Niigata in autumn and travel through Niigata on an SL train.
Your chance to see the real Japan.



Niigata--the place to be!

Only about **120** minutes from Tokyo by Shinkansen!



Ketto Onsen/Tsunan-machi

Koshihikari Rice/Uonuma-shi

Maiko/Sakata-shi

Niigata Sushi-zanmai "Kiwami"/Niigata-shi

Streets lined with black fences/Murakami-shi



うまさぎっしり
新潟

JR-EAST Shinkansen Reservation You can reserve seats on the internet!
<http://jreast-shinkansen-reservation.eki-net.com>



JR
JR-EAST

Get full enjoyment out of your visit to Niigata with the JR EAST PASS SPECIAL!

From 1 October 2009 to 31 December 2009

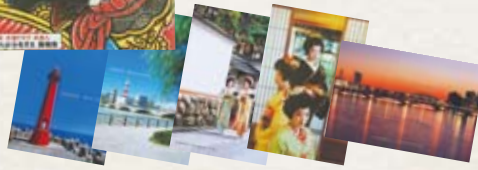
You can receive some nice gifts if you visit the Niigata area during the dates listed above using the JR EAST PASS SPECIAL. Get even more enjoyment out of visiting Niigata using discount tickets. Show your pass at locations A through G below to receive the gifts.

Present Campaign



A Miniature Kite and Picture Postcard Set

Tourist Information Center, Bandai Exit, Niigata Station
A one-minute walk from the Bandai Exit of Niigata Station
tel.025-241-7914



E Picture Postcard Set

The Tourist Information Center in front of Murakami Station (Murakami Ekimae Tourist Information Center)
A one-minute walk from Murakami Station
tel.0254-50-7234
Limited to the first 200 Visitors
*Actual contents of the picture postcard set may be subject to change.



B Sado Okesa Folk Song CD

Niigata Port Sado Kisen Ticket Sales Counter
15 minutes by bus from Niigata Station
tel.025-245-5111
*Available only to customers who show their pass and buy a car ferry or jetfoil ticket. Limited to the first 500 visitors

C Japanese Ibis (Toki) Paper Balloon

Sado Kisen Ryotsu Port Terminal, Second Floor
Sado Tourist Association
tel.0259-27-5000

D 140 g of Koshihikari Rice grown in Uonuma

Echigo-Yuzawa Station, Yukiguni Tourist Wide-Area Tourist Information Center inside Echigo-Yuzawa Station
tel.025-785-5678

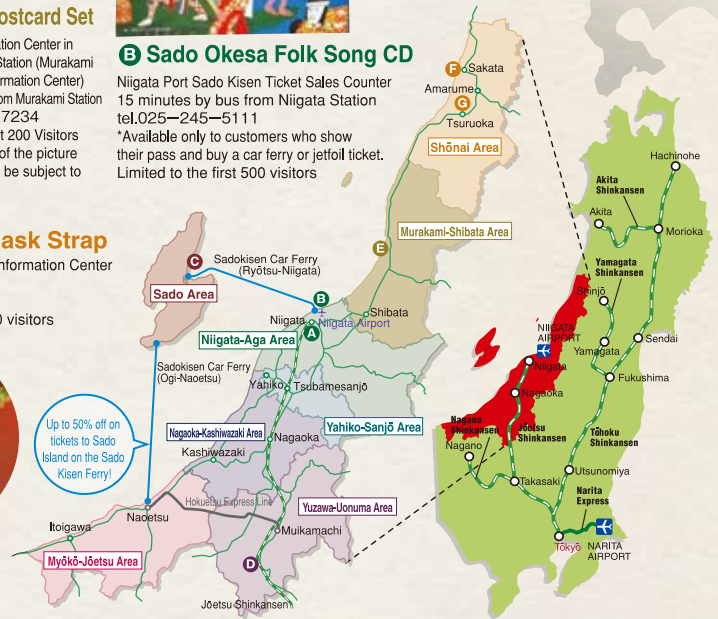


G Mini Goten Ball

Tsuruoka City Tourist Information Center inside Tsuruoka Station
tel. 0235-25-7678
*Limited to the first 200 visitors

F Mini Lion Mask Strap

Sakata Station Tourist Information Center inside Sakata Station
tel.0234-24-2454
*Limited to the first 200 visitors



*For more information about the gifts described above and tickets for the Sado Kisen Ferry, please visit the following website: <http://www.jreast.co.jp/e/niigata/>
*The gift campaign will finish at each location once all gifts have been given out.



Myōkō and Jōetsu Area/Rinsenji Yuzawa and Uonuma Area/Tanada Nagaoka and Kashiwazaki Area/Hegi soba Yahiko and Sanjo Area/Yahiko-jinja Shrine Sado Area/Sado Goldmine Niigata and Aga Area/Northern Culture Museum Murakami and Shibata Area/Murakami Sahn Dishes Shōnai Area/Sankyo Warehouse

Enjoy looking at the beautiful scenery of Niigata from the window while riding on a resort train.



To enjoy breathtaking mountains and rivers Take the SL Banetsu Monogatari

Running dates: Operates mainly on Saturdays, Sundays, and National Holidays*

Station	Niigata	Niitsu	Gosen	Sakihana	Mikawa	Tsugawa	Hideya	Nozawa	Yamato	Kitakata	(Shiokawa)	Aizu-Wakamatsu
---------	---------	--------	-------	----------	--------	---------	--------	--------	--------	----------	------------	----------------



To enjoy the stunning ocean and pastoral landscapes Take the Kirakira Uetsu

Running dates: Operates mainly on Saturdays, Sundays, and National Holidays*

Station	Niigata	Toyosaka	Shibata	Murakami	Kuwagawa	Gatsugi	Fuya	Nezugasaki	Atsumi-osen	Tsuruoka	Amarume	Sakata	(Yuzza)	(Fukura)	(Kisakata)
---------	---------	----------	---------	----------	----------	---------	------	------------	-------------	----------	---------	--------	---------	----------	------------

*All seats on the SL Banetsu Monogatari and Kirakira Uetsu trains are reserved seats.
*For dates of operation for these trains, please visit the following website: <http://www.jreast.co.jp/e/niigata/>

"JR EAST PASS SPECIAL" Exchange / Sales Offices

Station	Exchange/sales office	Office hours
Aomori	Travel Service Center	10:00-18:00
Hachinohe	Travel Service Center	10:00-17:30
Akita	Travel Service Center	10:30-18:00
Sendai	Travel Service Center	10:00-19:00
Yamagata	Travel Service Center	10:00-18:00
Fukushima	Travel Service Center	10:30-19:00
Niigata	Travel Service Center	10:00-19:00
Nagano	Travel Service Center	10:00-19:00
Narita Airport	Travel Service Center	9:30-19:00
Terminal 1	Ticket Office	6:30-9:30, 19:00-21:45
Airport	Travel Service Center	10:30-20:00
Terminal 2	Ticket Office	6:30-10:30, 20:00-21:45

Station	Exchange/sales office	Office hours
Tōkyō	Exchange: JAPAN RAIL PASS Exchange Corner (Yaesu North) Sales: Ticket Office (Yaesu North)	7:30-20:30 7:00-21:00
Shinagawa	Exchange: Information Center (Central) Sales: Travel Service Center	9:00-19:00 9:30-20:00
Ueno	Travel Service Center	10:30-20:00
Shinjuku	Exchange: Information Center (South) Sales: Travel Service Center (East)	9:00-19:00 9:30-20:00
Shibuya	Exchange: Information Center (South) Sales: Travel Service Center	10:00-18:30 11:00-20:00
Ikebukuro	Exchange: Information Center (Central) Sales: Travel Service Center (West)	9:30-18:00 9:30-20:00
Yokohama	Travel Service Center	11:00-20:00

Note: Indicated office hours are for weekdays. Hours vary among offices on weekends and holidays. For office hours for weekends and national holidays, please visit the JR East website. Office hours are subject to change without notice.

JREastInfoLine

Provides train schedules, the shortest routes to each destination, the locations of JR Ticket Offices (Midori-no-madoguchi), and more in English, Korean and Chinese.
10:00 a.m. - 6:00 p.m.
(except during the year-end/new year holidays)

call 050-2016-1603

Seat reservations cannot be accepted by this telephone service.



<http://www.jreast.co.jp/e/>