

Businesses Outline of the JR East Group (as of March 31, 2016)

The JR East Group has four business segments: Transportation, Station Space Utilization, Shopping Centers & Office Buildings, and Others. The relationship of East Japan Railway Company and other related companies to each business segment are as shown below.

■ Transportation

This segment conducts passenger transportation operations centered on railway and railcar manufacturing operations. With a service area mainly covering Tokyo and the combined 16 prefectures of Kanto Tohoku regions, JR East's railway operations comprise 1,665 railway stations, 6,263.1 operating kilometers of conventional lines, and 1,194.2 kilometers of Shinkansen lines, spanning a total of 7,457.3 kilometers.

■ Station Space Utilization

This segment creates commercial spaces in railway stations by developing various types of business, including retail stores and restaurants.

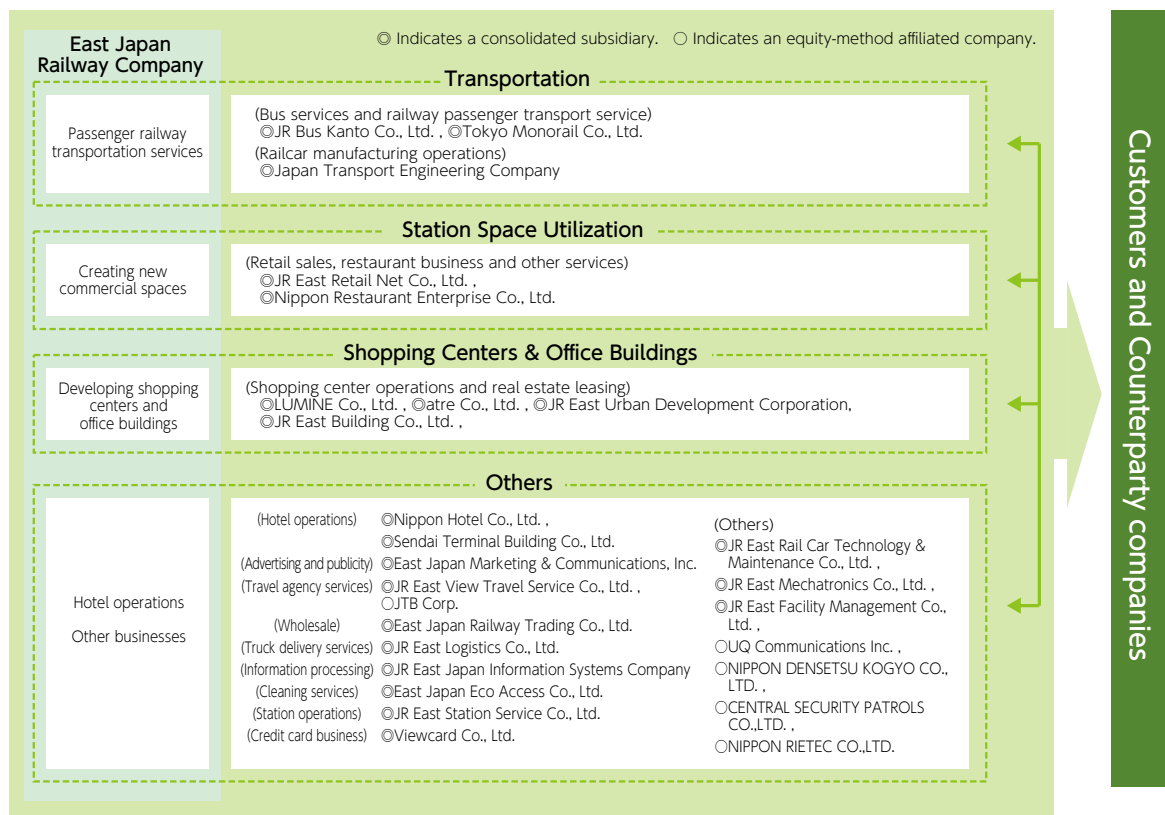
■ Shopping Centers & Office Buildings

This segment develops properties within or near railway stations, manages shopping centers and leases office buildings and other properties.

■ Others

In addition to the above, JR East conducts businesses related hotel operations, advertising and publicity, credit card operations, among others.

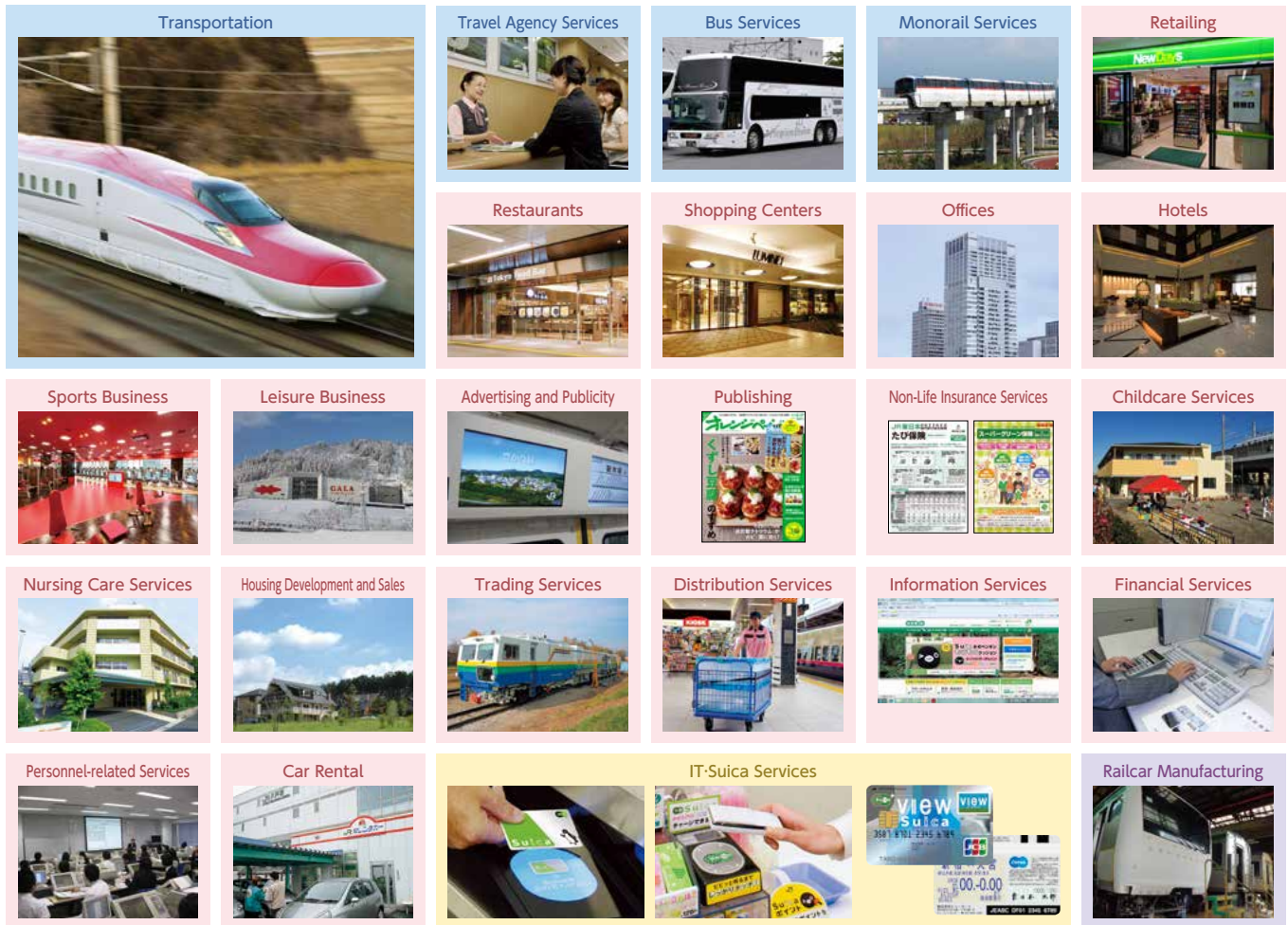
The following is a schematic of JR East's business network.



In relation to the supply chain, as the JR East Group operates various businesses with a focus mainly on the railway business, it can be divided into two parts, the railway business and non-railway businesses.

For the railway business, JR East generates electricity at its own power stations or directly purchases electricity from electrical companies. Electricity is provided to trains through substations and overhead contact lines. Additionally, we operate railways and offer transport services to our customers through the provision of continuous comprehensive services, while also maintaining station staff members, conductors and other various facilities.

With regard to non-railway businesses, while pursuing synergetic effects with the railway business itself, each business operates its own specific supply chain, as it provides various services to customers.



Businesses of the JR East Group (as of July 1, 2016)

■ Transportation services

JR Bus Kanto Co., Ltd. / JR Bus Tohoku Co., Ltd. / Tokyo Monorail Co., Ltd.

■ Shopping center operations

Tetsudo Kaikan Co., Ltd. / atre Co., Ltd. / LUMINE Co., Ltd. / Yokohama Station Building Co., Ltd. / Shonan Station Building Co.,Ltd. / JR Chuo Line Mall Co., Ltd. / JR East Department Store Co., Ltd. / JR Tokyo West Development Co., Ltd. / Kinshicho Station Building Co., Ltd. / Chiba Station Building Co., Ltd. / JR East Aomori Business-Development Company Co., Ltd. / Tokky Co., Ltd. / Station Building MIDORI Co., Ltd.

■ Office operations

JR East Building Co., Ltd.

■ Hotel operations

Nippon Hotel Co., Ltd. / Sendai Terminal Building Co., Ltd. / Morioka Terminal Building Co., Ltd. / Akita Station Building Co., Ltd.

■ Retail shop and restaurant businesses

JR East Retail Net Co., Ltd. / Nippon Restaurant Enterprise Co., Ltd. / JR East Food Business Co., Ltd. / JR East Station Retailing Co., Ltd. / JR East Water Business Co., Ltd. / Kinokuniya Co., Ltd. / JR East Tohoku Sogo Service Co., Ltd.

■ Trading and logistics businesses

East Japan Railway Trading Co., Ltd. / JR East Logistics Co., Ltd.

■ Travel agent and car rental services

JR East View Travel Service Co., Ltd. / JR East Rental & Lease Co., Ltd.

■ Sports and leisure businesses

JR East Sports Co., Ltd. / GALA YUZAWA Co., Ltd.

■ Real estate management

JR East Urban Development Corporation

■ Information, financial, and personnel services

JR East Japan Information Systems Company / JR East Net Station Co., Ltd. / JR East Management Service Co., Ltd. / JR East Personnel Service Co., Ltd. / JR East Green Partners Co.,Ltd.

■ Credit card business

Viewcard Co., Ltd.

■ Advertising and publishing

East Japan Marketing & Communications, Inc. / Tokyo Media Service Co., Ltd. / The Orangepage, Inc.

■ Cleaning and linen supply services

JR East TESSEI Co., Ltd. / JR East Transportation Services Co., Ltd. / East Japan Eco Access Co., Ltd. / JR East Station Service Co., Ltd. / JR Takasaki Railway Services Co., Ltd. / JR Mito Railway Services Co., Ltd. / JR Chiba Railway Services Co., Ltd. / JR Technoservice Sendai Co., Ltd. / Morioka Railway Servicing Co., Ltd. / JR Akita Railway Services Co., Ltd. / JR Niigata Railway Services Co., Ltd. / JR Nagano Railway Services Co., Ltd. / JR Higashinohon Linen Co., Ltd.

■ Construction consulting and maintenance services

JR East Consultants Company / JR East Design Corporation / JR East Facility Management Co., Ltd. / JR East Mechatronics Co., Ltd. / Union Construction Co., Ltd.

■ Rolling stock manufacturing and maintenance

Japan Transport Engineering Company /JR East Rail Car Technology & Maintenance Co., Ltd.

■ Overseas railway consulting

Japan International Consultants for Transportation Co., Ltd.

■ Generation and district heating and cooling

JR East Energy Development Co., Ltd / Shinjuku South Energy Service Co., Ltd.