

URL <http://www.jreast.co.jp/eco/>

- Promotion of environmental activities at work place
- Environmental education now underway
- Award for environmental activities ● ISO14001 certification

A management system to promote environmental conservation activities

We at JR East promote environmental conservation activities across our departments by setting clear targets and promoting individual employee's awareness.

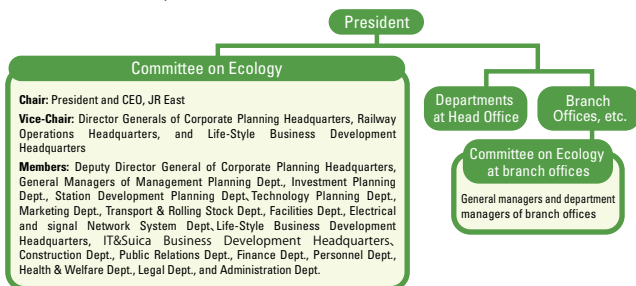
Creating an environment-conscious climate

Concerted effort by the entire JR East Group

JR East believes that it is important to promote environmental activities in which every JR East Group employee can voluntarily and actively engage for the goals set for these activities and implement effective measures. We are trying to expand the scale of our environmental activities across the company through the development of the "JR East Eco Activities", measures to promote environmental activities at each work place, the education of leaders through environmental education, and sharing of exceptional environment measures through the presentation of awards.

The Committee on Ecology surveys environmental impact caused by business activities, sets environment-related targets, implements environment conservation activities, and performs checks and examinations by the management on the degree of achievement of targets. The committee was set up in 1992 and has its headquarters in the Management Planning Department, and functions as a cross-departmental body, with its chair served by the President and CEO of JR East and its members consisting of the General Managers from each department. The JR East Group Environment Management Promotion Conference, in which those responsible for environment of group companies participate, takes place every year. In fiscal ended March 2008, challenges and outstanding cases of achievement were shared across the Group.

Organizational structure to promote environmental management (as of June 30, 2008)



Department name	Main activities	Working group name
Environmental management	Promotion of environment conservation activities at each work place, promotion of environment management as a whole group, management of environmental targets and publication of environmental activities, etc.	* JR East Eco Activities WG * JR East Group environment management promotion WG
Measures to prevent global warming	Reduction of CO ₂ emissions through reduced electricity use and new energy technologies, reduction of CO ₂ emission volume throughout the entire transport system, etc.	* Eco station WG * Eco railcar WG * Railway usage promotion WG
Measures for resource circulation	Recycling of wastes from stations and trains, reduction and recycling of industrial waste, eco-friendly procurement, etc.	* Station & train waste WG
Chemical substance management	Management of ozone depleting substances, chemical substances, PCB, etc.	* PCB waste WG
Environmental activities along railway lines	Measures against noise, utilization of spring water in tunnels, conservation and utilization of railway trees, proper use of herbicide, etc.	* Railway trees conservation & utilization WG * Proper herbicide usage WG

Implementation of Environmental Education

For effective environmental management, it is essential that all employees have appropriate knowledge on environmental issues. We provide environmental education lectures to a large number of our employees, ranging from new employees to people who promote environmental activities in JR East and group companies. Through these lectures, we aim to expand the scale of our environmental activities. In fiscal ended March 2007, to enhance environmental activities at each group company, we began an "Environmental management training" program for people in charge of environmental matters in those companies.

ISO14001 certification

JR East has been striving to acquire ISO14001 certification. The certification is an international standard for environmental management systems. At JR East we are working to acquire the certification mainly at facilities that have relatively large environmental impacts.

All of our General Rolling Stock Centers, which are responsible for train maintenance, are certified under ISO14001.

Internal environmental audits

At our General Rolling Stock Centers, for example, in-house auditors are trained through external training programs, and conduct routine audits at the centers in order to evaluate environmental activities. On one occasion, internal environmental auditors pointed out that environment education had not been given to temporary workers, and this was subsequently corrected.

Environment risk management

JR East is working to establish a system to prevent environmental accidents by more rigidly managing chemical substances. We prepared emergency response manuals for on-site locations such as our thermal power plant and General Rolling Stock Centers that handle chemical and hazardous substances.

We are also preparing ourselves to properly respond to any contingencies by holding workshops and training sessions on how to handle such substances, and ensuring that related information reaches all related personnel.

Environment-related accidents

In fiscal ended March 2008, there were no environment related accidents and no cases of violation of any environmental law or and regulation in the JR East Group.