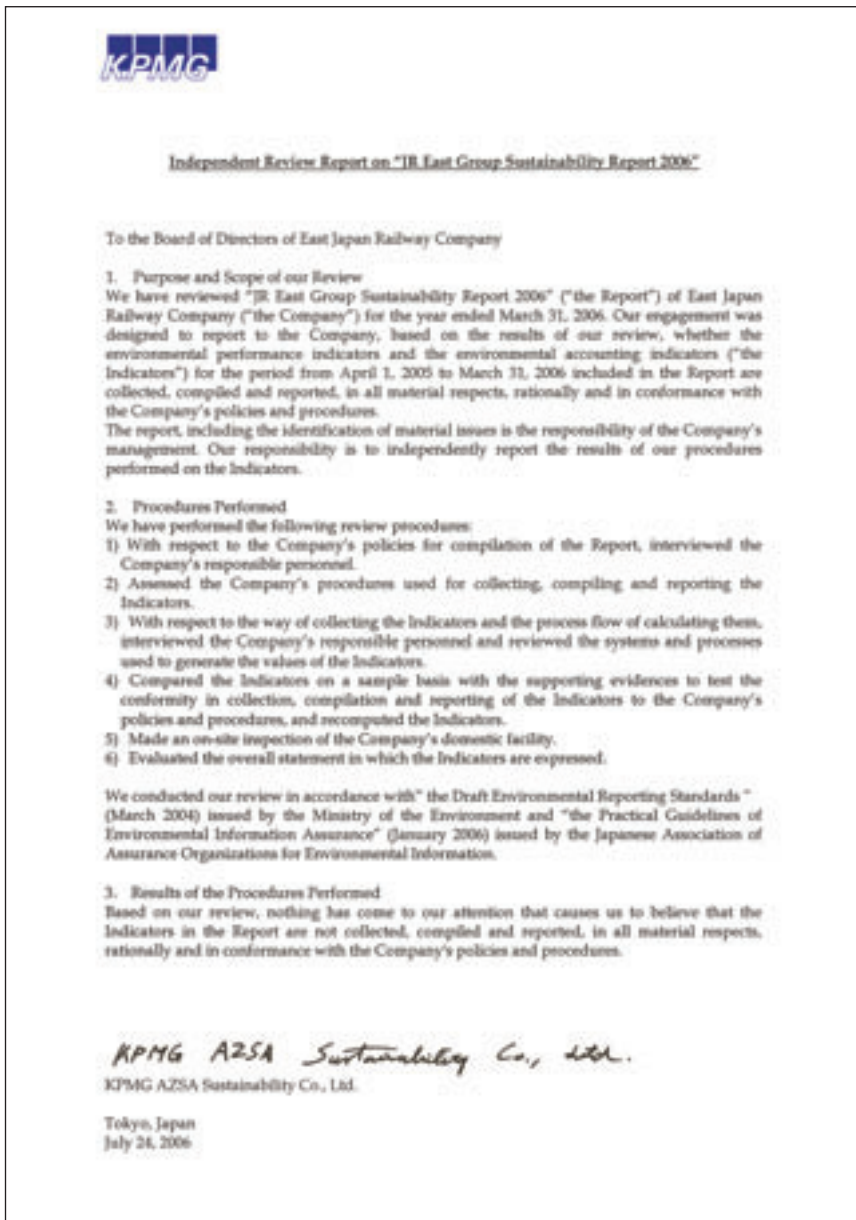


Independent review report, and future prospects



Maho Yano
 Chief of Assurance Division
 AZSA Sustainability Co., Ltd.
 (Group company of)
 (KPMG AZSA & Co.)

The JR East Group has announced its policies on safety as the top commitment in its previous *Sustainability Report*, but in this edition it has changed the layout of the report to start with management, followed by social, environmental, and economic aspects in this order. The Group still considers safety as a priority management task, and many pages of the first half of the report are devoted to conveying information on it, both qualitatively and quantitatively. The section on social aspects does not simply disclose comprehensive social-performance indicators, but demonstrates its social initiatives in full recognition of the importance of its businesses in society. Although there are still some parts in the report that lack sufficient information due to the limited amount of space provided, it can be expected that JR East Group will continue to elaborate on its priorities and disclose information in a timely manner.

Additionally, given a wide range of business categories and types in the JR East Group, it is necessary for the Group to create working groups for each business category, and advance environmental conservation activities by setting quantitative targets suited to each of them. Also, the fine-tuning of its statistical tabulation format and the creation of an information-gathering system can be instrumental in promoting environmental conservation as well as in improving the accuracy of environmental statistics.

Future prospects

With the launch of the nation-wide Team Minus 6% project, I believe that fiscal 2005 was a year that spurred many people to think about and act to solve global environmental issues. We also started the JR East Eco Activities, which are bottom-up environmental initiatives carried out at the workplace level, starting with the Hachioji Branch Office. We plan to expand these activities company-wide, with the aim of making them take root in our workplace and operations.

We are also determined to promote and extend our group-wide initiatives in order to encourage independent activities of our Group companies by taking advantage of the characteristics of their business categories.



Tadami Tsuchiya
 General Manager of
 Environmental Management
 Management Planning Department