

How Does the JR East Group Promote Environmental Management?

The entire JR East Group strives to strengthen its environmental management system for promotion of environmental conservation. At the same time, we provide environmental education to raise the environmental awareness of each employee.

Implementation of Environmental Management

In-house Committee on Ecology

We established the Committee on Ecology to responsibly exercise the establishment of the environmental goals as well as the implementation of the environmental impact assessment for all operations and of environmental activities. The Committee also confirms the achievement of the goals and the executive oversight. This cross-departmental committee – having its secretarial office in the Management Administration Department – consists of general managers from every department and is chaired by the Chairman of JR East.

In FY 2003, the “JR East Group Environmental Management Advancement Conference” was established to strengthen the overall initiatives carried out by the group.

ISO14001 Certification

We are promoting the acquisition of ISO14001 Certification, the international standard for environmental management systems, particularly for sectors of our business that have a comparatively high environmental impact. Beginning with the Niitsu Rolling Stock Manufacturing Factory in FY 1998, several other sites have acquired the certification, and in FY 2003 the Koriyama General Rolling Stock Center has added its name on the list.

As for our group companies, East Japan Eco Access Co., Ltd., LUMINE Co., Ltd. and the Production Operation Division for box lunches and other products in Nippon Restaurant Enterprise Co., Ltd. have obtained certification as well.



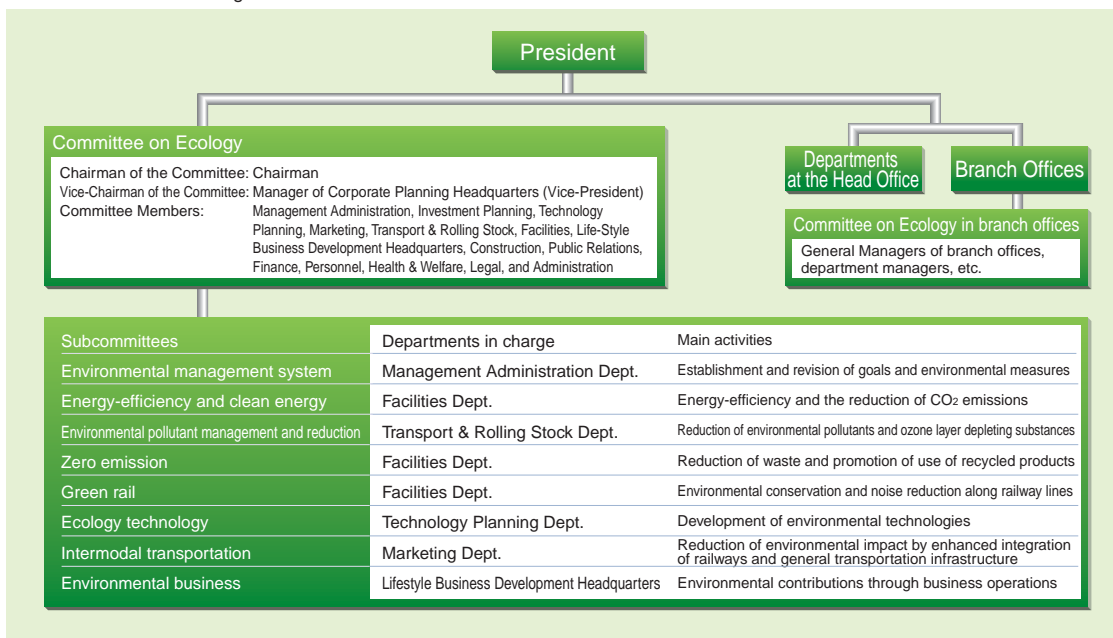
Koriyama General Rolling Stock Center has just acquired ISO14001 Certification.



Acquisition of ISO14001

Site	Date
Niitsu Rolling Stock Manufacturing Factory	February 1999
Kawasaki Power Plant	March 2001
Tokyo General Rolling Stock Center	March 2001
Niigata Mechanical Technology Center	March 2001
Omiya General Rolling Stock Center	March 2002
Shinkansen General Rolling Stock Center	November 2002
Koriyama General Rolling Stock Center	December 2003

Environmental Management Advancement Structure



Internal environmental audit

JR East performs environmental activities based on a concept of Plan-Do-Check-Action (PDCA) cycle under the supervision of the Committee on Ecology.

At the rolling stock workshops, for example, we conduct regular audits carried out by internal auditors, who had been sent to take external trainings, to evaluate our own environmental activities. In an internal environmental audit, it was indicated that some activities, such as the reevaluation of environmental impact assessment and the records following education and training, have not been fully and correctly executed. These activities have since been improved to meet set standards.

Environmental risk management

Strict management of chemical substances has been implemented to prevent environmental disasters.

We have compiled emergency response manuals for the handling of chemical and other hazardous substances at the thermo-electric power plant and rolling stock factories. Personnel involved in handling such materials participate in study groups and/or in treatment trainings, share information and knowledge and are given on-site training exercises in their safe use.

Environment-related accidents

In FY 2003 we had no accidents that adversely affected the environment and were subject to no fines.

Environmental education

Environmental management makes it essential that all employees are properly aware of environmental issues. We therefore provide environmental education to all new recruits and new management staffs, and provide lectures in environmental subject through seminars or online; a total of 2,800 employees received environmental education during FY 2003.

We also provide information on environmental issues through digest version of our sustainability report, which was distributed to all employees, as well as monthly in-house magazine *JR Higashi*, newsletters published by each branch, intra-branch office LAN, and posters.



Providing information on environmental issues through distributing Digest version of the sustainability report, distributed to all employees, and our in-house magazine *JR Higashi*

Evaluation of environmental performance

JR East evaluates and encourages employee efforts toward environmental conservation.

For example, at the 17th Presentation Meeting of Small Group Activities held in December 2003, the group "Norarikurari" of Takasaki Mechanical Technology Center received an Award for Outstanding Activities.

The group had noticed that wastewater from the railcar cleaning facility could be reused. Upon completion of water quality survey, they decided to use it in the pollutant processing facility. This led to a substantial reduction in the use of water resources and has reduced water and sewage costs as well.



Posters introducing organic vegetables produced using recycling-based agricultural techniques outside the staff canteen

Environmental education

Seminars and lectures	Number of sessions	Number of participants
Training for new on-site supervisors	8	160
Training for implementation managers	1	200
Training for new recruits	1	1,330
Training for new management staff	5	70
Environmental seminars	20	790
Online training	—	250