

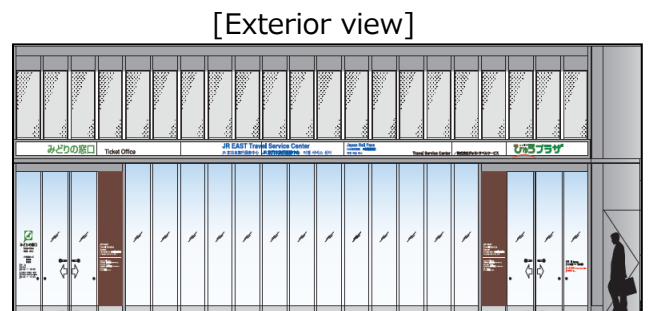
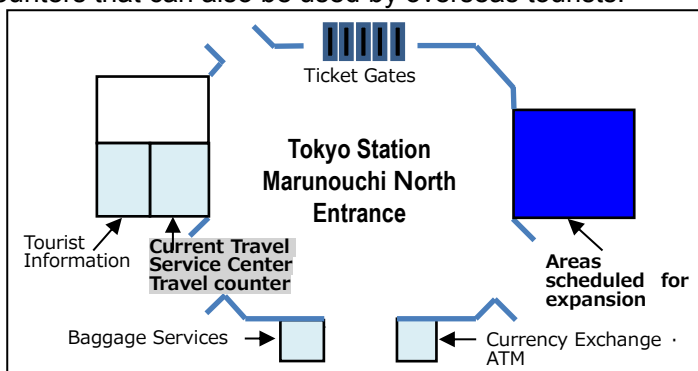
About the expansion of the "JR EAST Travel Service Center" at Tokyo Station

- We are expanding the service counters for overseas visitors to Japan -

With the increase in the number of overseas visitors to Japan in recent years, the number of overseas tourists using our railways, including those who use the Japan Rail Pass, has also risen. In order to respond to these needs, we are expanding the JR EAST Travel Service Center in Tokyo Station, and increasing the number of service counters available for use by overseas tourists. We are improving our system to accommodate overseas visitors to Japan and will continue to support comfortable "railway travel" in Japan.

1. Overview of expansion

The current JR EAST Travel Service Center in Tokyo Station will be expanded by remodeling and modifying the Tokyo Station Travel Service Center (View Plaza) and the JR Ticket Office (Midori-no-madoguchi) inside the same Marunouchi North Entrance Dome, transforming them into travel counters that can also be used by overseas tourists.



2. Details of services of expanded areas

- ◇ Scheduled start of operations June 1, 2016 (Wed.)
- ◇ Operating hours 8:30–19:00 (–17:00 on Saturdays and holidays) *open all year round
(The current location is open from 7:30–20:30)
- ◇ Services provided Exchange of "Japan Rail Pass", exchange and sales of JR East's inbound passes, sales of other JR train tickets and domestic travel products
*Japanese domestic travel products are on sale on weekdays from 11:00–19:00
- ◇ No. of additional counters 7 counters (The current location has 3 counters, and there will be a total of 10 after the expansion)
- ◇ Operating company JR EAST VIEW Travel Service Co., Ltd.

Please see here for more information about the JR EAST Travel Service Center.

http://www.jreast.co.jp/e/customer_support/index.html